



SENTRALE STATISTIEKDIENS
CENTRAL STATISTICAL SERVICES

VERSLAG No. 06-01-16

REPORT No. 06-01-16

**SENSUS VAN
LANDBOU- EN VEE-
TEELTPRODUKSIE,
1980**

**CENSUS OF
AGRICULTURAL AND
PASTORAL PRODUCTION,
1980**

D1, D2

Verkoopprijs • Selling price
(AVB uitgesluit/GST excluded)
Plaaslik **R2,10** Local
Buitelands R2,50 Other countries
Posvry • Post free

ISBN 0 621 09447 1

VERSLAG NO. 06-01-16

SENSUS VAN LANDBOU- EN VEETEELTPRODUKSIE,
1980

REPORT NO. 06-01-16

CENSUS OF AGRICULTURAL AND PASTORAL PRODUCTION,
1980

Tabel No.	Bladysy Page		Table No.
	v	Preface	
	vi		
	viii	Explanatory Notes	
	x		
	xi	List of Reports	
	xii	Map	
	xiii	Guide for statistical regions	
1	1	SUMMARY OF PRINCIPAL STATISTICS - 1976 TO 1980	1
2	2	NUMBER OF FARMS, CURRENT EXPENDITURE AND VALUE OF SALES ACCORDING TO OWNERSHIP	2
3		EMPLOYMENT, SALARIES AND WAGES, VALUE OF RATIONS	3
3.1	9	Employment - All employees	3.1
3.2	20	Salaries and Wages	3.2
3.3	46	Value of rations and other goods and services	3.3
4		AGRICULTURAL CROPS	4.
4.1	68	Wheat, seed cotton, edible dry beans and millet and manna. Grain sorghum, groundnuts and sunflower seed	4.1
4.2	90	Production of maize	4.2
4.3	102	Application of maize production	4.3
4.4	114	Horticultural crops	4.4
5.		LIVE-STOCK AND POULTRY	5.
5.1	125	Sheep	5.1
5.2	142	Cattle, goats, pigs and fowls	5.2
5.3	157	Number of cattle according to breed, age, stud and non-stud	5.3
6	164	MOTOR VEHICLES AND OTHER EQUIPMENT	6
7		EXPENDITURE INCURRED IN CONNECTION WITH FARMING OPERATIONS	7
7.1	178	Current expenditure according to ownership	7.1
7.2	181	Current expenditure according to magisterial district	7.2
7.3	213	New equipment purchased for farming purposes according to ownership	7.3
7.4	214	New equipment purchased for farming purposes according to magisterial district	7.4
7.5	225	New buildings erected and development works undertaken according to ownership	7.5
7.6	226	New buildings erected and development works undertaken according to magisterial district	7.6

Tabel No.		Bladsy Page		Table No.
8.	WAARDE VAN PLAASPRODUKTE EN LEWENDE HAWE VERKOOP VOLGENS LAND- DROSDISTRIK	237	VALUE OF FARM PRODUCTS AND LIVE-STOCK SOLD ACCORDING TO MAGIS- TERIAL DISTRICT	8
9	LEWENDE HAWE AANGEKOOP EN BOERDERY- SKULD		LIVE-STOCK PURCHASED AND FARMING DEBT	9
9.1	Lewende hawe aangekoop en boerdery- skuld volgens eienaarskap	247	Live-stock purchased and farming debt according to ownership	9.1
9.2	Lewende hawe aangekoop en boerdery- skuld volgens landdrosdistrik	248	Live-stock purchased and farming debt according to magisterial district	9.2

VOORWOORD

Sedert 1979 word die Landbousensusse per pos opgeneem en nie meer met behulp van die Suid-Afrikaanse Polisie soos in die geval van die voorafgaande jare nie. Hierdie verslag bevat die resultate van die tweede posopname wat oor landbou deur die Sentrale Statistiekdiens onderneem is. Die opname het 69 372 boerderyeenhede gedek.

'n Lys van verslae wat ten opsigte van Landbousensusse vanaf 1971 gepubliseer is, verskyn na die "Verduidelikende Opmerkings".

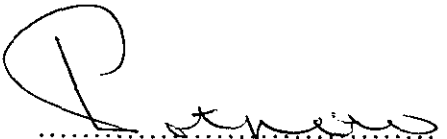
PREFACE

Since 1979, Agricultural Censuses are conducted by post and no longer with the assistance of the South African Police as was the case in preceding years. This report contains the results of the second postal survey on agriculture undertaken by the Central Statistical Services. The survey covered 69 372 farming units.

A list of reports which have been published in respect of Agricultural censuses as from 1971 is shown after the "Explanatory Notes".

PRETORIA

AUGUSTUS 1985
AUGUST


.....
HOOF: SENTRALE STATISTIEKDIENS
CHIEF: CENTRAL STATISTICAL SERVICES

VERDUIDELIKENDE OPMERKINGS

1. OMVANG VAN DIE LANDBOUSENSUS

Vir doeleindes van die Landbousensus is die kweek van landbougewasse, vrugte, druiwe, neute, saad, bolle, groente, blomme in die ope lug of onder glas; kwekerie, behalwe dié wat hoofsaaklik op herverkoop toegespits is; tee-, koffie- en suikerplantasies; die teel van vee, pluimvee, konyne, bye, peisdraende en ander diere; en dié produksie van melk, wol, pelse, eiers en heuning vir eie gewin as boerdery beskou. Gegewens van landbouhoewes in stedelike gebiede, dit is gebiede met een of ander vorm van plaaslike bestuur is slegs in daardie gevalle waar die produkte vir verkoop bedoel is, soos kwekerie, groentetuine, blomplase en melkerye ingesluit in hierdie verslag terwyl gegewens van alle ander boerdery-eenhede, ongeag die grootte of oppervlakte daarvan, getoon word.

Blanke, Aleurling- en Asiërboere wat hul eie of gehuurde boerderyeenhede bewerk het, uitgesonderd boere in die nasionale state, die Transkei, Bophuthatswana, Venda en Suidwes-Afrika moes opgawe indien. Swart boere wat boerderyeenhede bewerk het wat nie in die nasionale state geleë is nie, het hulle verkorte opgawe ingedien. Die besonderhede van hierdie Swart boere is in Tabel 1 by die gegewens ten opsigte van die nasionale state ingesluit.

2. OPMERKINGS EN BEGRIPPE WAT GEBRUIK WORD

2.1 Sensusjaar

Besonderhede met betrekking tot die getal boere of houer, die getal plaaswerknemers, lewende hawe, motorvoertuie, trekkers en stropers is gevra soos op 31 Augustus 1979, terwyl arbeidsvergoeding, uitgawe en waarde van plaasprodukte verkoop, betrekking het op die twaalf maande geëindig 28 Februarie 1979 of 30 Junie 1979. Wat landbou- en tuingewasse betref, het die besonderhede betrekking op die produksieseisoen 1978-79. Boerderyskuld is gevra soos op 30 Junie 1979.

2.2 Boerderyeenheid

Die Boerderyeenheid of hewe bestaan uit een of meer afsonderlike plase of stukke grond, of hulle aangrensend is of nie, mits hulle in dieselfde landdrostdistrik geleë is en daarop as hulle eenheid geboer word. Plase of stukke grond wat egter in verskillende landdrostdistrikte geleë is, is as afsonderlike boerderyeenhede beskou. Waar die woord "plase" in die tabelle gebruik word, word bedoel hulle boerderyeenheid.

2.3 Boer of houer

Die boer of houer is die persoon, onderneming of instelling wat die boerdery vir eie gewin bedryf, ongeag aan wie die grond waarop geboer of om hulle deel geboer word, behoort. Indien twee of meer persone in vennootskap of as maatskappy die boerdery as hulle eenheid bedryf het, is hulle vir die doel van die sensus as een boer of houer beskou.

3. VERGELYKBAAARHEID MET VORIGE SENSUSSE

Wanneer besonderhede van hierdie sensus met dié van die vorige opnames vergelyk word, moet veral die volgende in gedagte gehou word:-

3.1 Verandering van landdrostdistriksgrense.

3.2 Wisselbou.

3.3 Wisselende klimaatstoestande.

4. OPMERKINGS OOR TABELLE

4.1 Tabel 1

Veegetaille ten opsigte van die nasionale state sluit in vee van selfstandige Swart boere buite die nasionale state.

4.2 Tabel 3.1 - Werkgeleentheid

Daar word onderskei tussen die volgende soorte plaaswerknemers:-

4.2.1 Gereelde werknemers wat gewoonlik plaaswerk verrig in die landbou en in bosbou- en suikerrietplantasies - bestuurders, voormanne en ander gereelde werknemers is ingesluit.

4.2.2 LOS werknemers, dit wil sê, seisoens- en geleentheidswerknemers uitgesonderd kontrakteurs en hulle werknemers.

4.2.3 Huisbediendes, dit wil sê, werknemers wat uitsluitlik of hoofsaaklik huiswerk verrig.

4.3 Tabelle 5.1 en 5.2

Eeste sluit kalwers in en skape sluit lamms in.

4.4 Tabel 5.2

Bokke sluit boklamms in en hoenders sluit kuikens in. Varke van alle ouderdomme is ingesluit.

4.5 Tabelle 7.1 en 7.2

- 4.5.1 Landbou dienste het betrekking op dienste gelewer deur kontrakteurs, koöperasies, ens., soos byvoorbeeld ploeg, stroop, dors, baal, pluk, bespuiting, skeer, ens.
- 4.5.2 Materiaal vir herstelwerk het betrekking op materiaal aangekoop vir die herstel van bestaande geboue en werke soos damme, geboue, omheininge, ens.
- 4.5.3 Versegkeringspremie betaal het betrekking op oeste, geboue, voertuie, masjinerie, implemente, diere, ens.

4.6 Tabelle 7.3 en 7.4

- 4.6.1 Toerusting aangekoop vir die pomp en aanlê van water sluit onder andere enjins, kragkoppe, windpompe, pype, ens., in.
- 4.6.2 Toerusting aangekoop vir die opwekking, geleiding en gebruik van elektrisiteit het betrekking op elektriese motore, kragopwekkers, bedrading, ens., maar sluit huishoudelike toestelle uit.
- 4.6.3 Alle ander toerusting en gereedskap aangekoop sluit onder andere ploeg, planters, mnymasjiene, gereedskap vir die bespuiting van gewasse, melkmasjiene en los gereedskap soos grawe, hawers, ens., in.

4.7 Tabelle 7.5 en 7.6

- 4.7.1 Werke onderneem vir die ontwikkeling en benutting van grond sluit onder andere kontoerwalle, afleibane en ontbossing in.
- 4.7.2 Alle ander konstruksiewerke sluit in voerkuile, dipbakke, krale, paale, brêe, ens.

4.8 Tabel 9.2

Onder boerderyskuld word ingesluit alle verpligtinge aangegaan, soos verbande, lenings en krediete ontvang van instansies soos banke, koöperasies, private persone, ens., vir normale boerderybedrywighede en vir persoonlike en huishoudelike doeleindes. Skulde ten opsigte van belange in ander sake-ondernemings is nie bygereken nie.

5. AFKORTINGS EN SIMBOLE GEBRUIK

0	=	Nul of nie van toepassing nie
ha	=	hektaar
O.V.S.	=	Oranje-Vrystaat
t	=	Metriese ton (2 204,622 lb)
..	=	Nie beskikbaar nie

6. AFRONDING

Die syfers in die tabelle is waar nodig afgerond tot die naaste finale syfer getoon. Daar kan dus geringe verskille wees tussen die totale van die saamstellende items en die totale getoon.

EXPLANATORY NOTES

1. SCOPE OF THE AGRICULTURAL CENSUS

For purposes of the Agricultural census the growing of field crops, fruits, grapes, nuts, seeds, bulbs, vegetables, flowers both in the open and under glass; nurseries except those predominantly engaged in reselling; tea, coffee and sugar plantations; raising of livestock, poultry, rabbits, bees, fur-bearing and other animals; and the production of milk, wool, fur, eggs and honey on own account are regarded as farming. Data in respect of agricultural holdings in urban areas, i.e. areas having some form of local authority, are included in this report only in those cases where the produce were intended for sale, such as nurseries, flower farms and dairy farms, while the data relating to all other farming units, irrespective of the size or area thereof, are shown.

White, Coloured and Asian farmers who operated their own or rented farming units, excluding farmers in the national states, the Transkei, Bophuthatswana, Venda and South West Africa had to submit returns. Black farmers who operated farming units which were not situated in the national states, submitted an abridged return. The details in respect of these Black farmers are included in Table 1 with those referring to the national states.

2. NOTES AND CONCEPTS USED

2.1 Census year

Details relating to the number of farmers or holders, the number of farm employees, livestock, motor vehicles, tractors and combines were called for as at 31 August 1979, while those in respect of remuneration of farm employees, expenditure and value of farm products sold refer to the twelve months ended 28 February or 30 June 1979. In regard to agricultural and horticultural crops the particulars refer to the production season 1978-79. Farming debt was called for as at 30 June 1979.

2.2 Farming unit

A farming unit or holding consists of one or more separate farms or portions of land whether contiguous or not, provided they are situated in the same magisterial district and are operated as a single unit. However, farms or portions of land situated in different magisterial districts are regarded as separate farming units. Where the word "farm" is used in the tables it means a farming unit.

2.3 Farmer or holder

The farmer or holder is the person or organisation who/which conducts farming operations for his/its own benefit, irrespective to whom the land belongs on which farming operations are conducted or is farmed on a share-crop basis. Where two or more persons conducted farming operations as a unit in partnership or as a company they were considered to be constituting a single farmer or holder for the purpose of the census.

3. COMPARABILITY WITH PREVIOUS CENSUSES

In comparing the results of this census with those for previous years the following should be borne in mind:-

3.1 Alterations of magisterial district boundaries.

3.2 Rotation of crops.

3.3 Fluctuating climatic conditions.

4. NOTES ON TABLES

4.1 Table 1

Live-stock numbers in respect of the national states include stock of independent Black farmers outside the national states.

4.2 Table 3.1 - Employment

The following classes of farm employees are distinguished:-

4.2.1 Regular employees who are normally engaged in farm work in agriculture and forestry and sugar cane plantations - managers, foremen and other farm employees are included.

4.2.2 Casual employees, i.e. seasonal and occasional employees, excluding contractors and their employees.

4.2.3 Domestic servants, i.e. employees who are mainly or exclusively engaged in domestic work.

4.3 Tables 5.1 and 5.2

Cattle include calves and sheep include lambs.

4.4 Table 5.2

Goats include kids and fowls include chickens. Pigs of all ages are included.

4.5 Table 7.1 and 7.2

- 4.5.1 Agricultural services refer to services rendered by contractors, co-operative societies, etc., such as ploughing, harvesting, threshing, baling, picking, spraying, shearing, etc.
- 4.5.2 Materials for repairs refer to materials purchased for repairs to existing buildings and works, such as dams, buildings, fencing, etc.
- 4.5.3 Insurance premiums paid are in respect of crops, buildings, vehicles, machinery, implements, animals, etc.

4.6 Table 7.3 and 7.4

- 4.6.1 Equipment purchased for pumping and installation of water includes, inter alia, engines, power-head pumps, windmills, pipes, etc.
- 4.6.2 Equipment purchased for generating, conducting and use of electricity refers to electric motors, generators, wiring, etc., but excludes household equipment.
- 4.6.3 All other equipment and implements purchased include, inter alia, ploughs, planters, mowers, cropepraying equipment, milking machinery and loose tools such as spades, hammers, etc.

4.7 Tables 7.5 and 7.6

- 4.7.1 Works undertaken for the development and utilisation of land, include, inter alia, contour banks, draining furrows, deforestation, etc.
- 4.7.2 All other construction works include pit silos, dipping tanks, kraals, roads, bridges, etc.

4.8 Table 9.2

Under farming debt is included all obligations incurred, such as mortgages, loans and credits received from organisations such as banks, co-operative societies, private persons, etc., for normal farming activities and for private and domestic purposes. Debts in respect of interests in other business enterprises were not included.

5. ABBREVIATIONS AND SYMBOLS USED

- 0 = Nil or not applicable
- ha = hectare
- O.F.S. = Orange Free State
- t = Metric ton (2 204,622 lb)
- .. = Not available

6. ROUNDING—OFF

The figures in the tables were, where necessary, rounded-off to the nearest final figure shown. There may, therefore, be slight differences between the totals of the composite items and the totals shown.

LYS VAN VERSLAE

Die volgende verslae is gepubliseer ten opsigte van sensusse vanaf 1971 tot 1979:

- Verslag No. 06-01-08 - Verslag oor Landbou- en Veeteeltproduksie, 1970-71
(Landbousensus No. 44)
Deel 1 - Houers en hoeves, werkgelcentheid en arbeidsvergoeding, Landbou- en voergewasse, groente, vrugte, blomme en damme.

Deel 2 - Lewende hawe, veeteeltproduksie, motorvoertuie, trekkers en stropers, uitgawes en boerderyskuld.
- Verslag No. 06-01-09 - Verslag oor Landbou- en Veeteeltproduksie, 1971-72
(Landbousensus No. 45)
- Verslag No. 06-01-10 - Verslag oor Landbou- en Veeteeltproduksie, 1972-73
(Landbousensus No. 46)
- Verslag No. 06-01-11 - Verslag oor Landbou- en Veeteeltproduksie, 1974
(Landbousensus No. 47)
- Verslag No. 06-01-12 - Verslag oor Landbou- en Veeteeltproduksie, 1975
(Landbousensus No. 48)
- Verslag No. 06-01-13 - Verslag oor Landbou- en Veeteeltproduksie, 1976
(Landbousensus No. 49)
Deel 1 - Houers en plase, getal, oppervlakte, waarde, grondbenutting, besproeiing, werkgelcentheid en arbeidsvergoeding.

Deel 2 - Landbou-, voer- en weidingsgewasse, groente en vrugte.

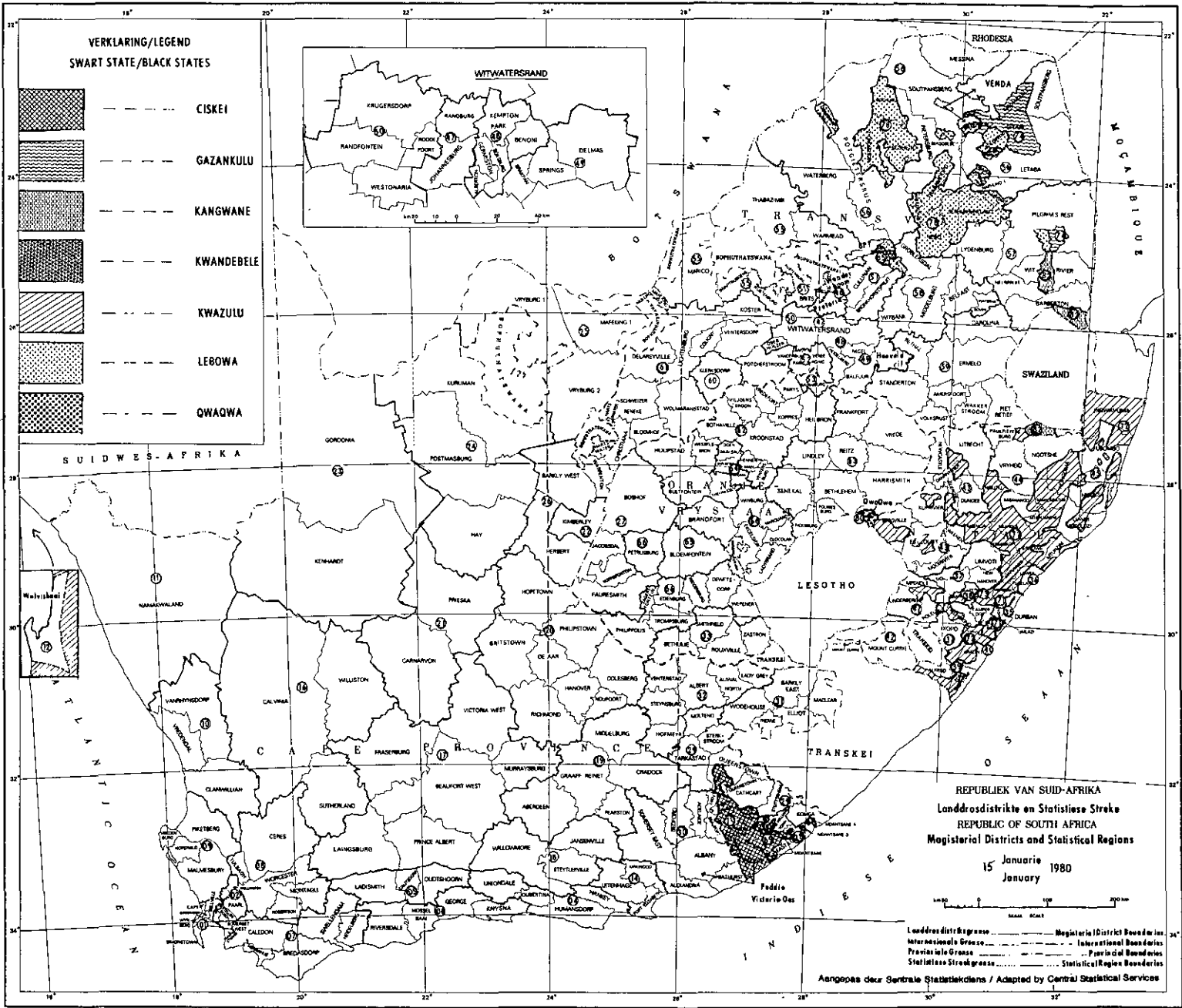
Deel 3 - Lewende hawe en pluimvee, landboumasjinerie, -uitrusting, -implemente en voertuie.

Deel 4 - Diverse landboustatistieke volgens inkomstegroeps en plaasgroottegroeps, uitgawes, waarde van plaasprodukte verkoop en boerderyskuld.
- Verslag No. 06-01-14 - Sensus van Landbou- en Veeteeltproduksie, 1978
- Verslag No. 06-01-15 - Sensus van Landbou- en Veeteeltproduksie, 1979

LIST OF REPORTS

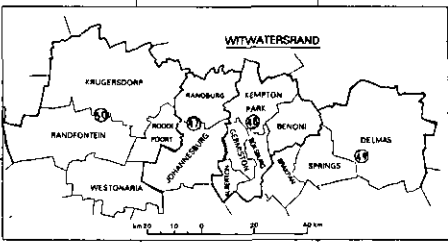
The following reports have been published in respect of censuses from 1971 to 1979:-

- Report No. 06-01-08 - Report on Agricultural and Pastoral Production, 1970-71
(Agricultural Census No. 44)
Part 1 - Holders and holdings, employment and remuneration of labour, agricultural and fodder crops, vegetables, fruit, flowers and dams.
Part 2 - Live-stock, live-stock production, motor vehicles, tractors and combines, expenditure and farming debt.
- Report No. 06-01-09 - Report on Agricultural and Pastoral Production, 1971-72
(Agricultural Census No. 45)
- Report No. 06-01-10 - Report on Agricultural and Pastoral Production, 1972-73
(Agricultural Census No. 46)
- Report No. 06-01-11 - Report on Agricultural and Pastoral Production, 1974
(Agricultural Census No. 47)
- Report No. 06-01-12 - Report on Agricultural and Pastoral Production, 1975
(Agricultural Census No. 48)
- Report No. 06-01-13 - Report on Agricultural and Pastoral Production, 1976
(Agricultural Census No. 49)
Part 1 - Holders and farms, number, area, value, land utilisation, irrigation, employment and remuneration of labour.
Part 2 - Agricultural, fodder and pastoral products, vegetables and fruit.
Part 3 - Live-stock and poultry, agricultural machinery, equipment, implements and vehicles.
Part 4 - Miscellaneous agricultural statistics according to income groups and farm size groups, expenditure, value of farm products sold and farming debt.
- Report No. 06-01-14 - Census of Agricultural and Pastoral Production, 1978
- Report No. 06-01-15 - Census of Agricultural and Pastoral Production, 1979



**VERKLARING/LEGEND
SWART STATE/BLACK STATES**

- CISKEI
- GAZANKULU
- KANGWANE
- KWANDEBELE
- KWAZULU
- LEBOWA
- QWAQWA



REPUBLIEK VAN SUID-AFRIKA
 Landroosdistrikte op Statistiese Streke
 REPUBLIC OF SOUTH AFRICA
 Magisterial Districts and Statistical Regions

15 Januarie 1980
 January



Landroosdistriktegrasse Magisterial District Boundaries
 Internasionale Grasse International Boundaries
 Provinsiale Grasse Provincial Boundaries
 Statistiese Strekegrasse Statistical Region Boundaries

Aangepas deur Sentrale Statistiekdiens / Adapted by Central Statistical Services

NOMMER VAN STATISTIESE STREEK EN NAAM VAN DISTRIK		NUMBER OF STATISTICAL REGION AND NAME OF DISTRICT	
BLANKE GEBIEDE/WHITE AREAS			
01	<u>KAAPPROVINSIE/CAPE PROVINCE</u> BELLVILLE GOODWOOD KAAP/CAPE SIMONSTAD/SIMONSTOWN WYNBERG	23	GORDONIA KENHARDT
		24	HAY POSTMASBURG KURUMAN
02	PAARL KUILSRIVIER/RIVER SOMERSET-WES/WEST STELLENBOSCH STRAND WELLINGTON	25	MAFEKING VRYBURG
		26	BARKLY-WES/WEST HARTSWATER HERBERT WARRENTON
04	HANKEY HUMANSDORP JOUBERTINA UNIONDALE	28	KING WILLIAM'S TOWN OOS-LONDEN/EAST LONDON
05	CALITZDORP LADISMITH OUDTSHOORN	29	GATHCART KOMGA MOLLENO QUEENSTOWN STERKSTROOM STUTTERHEIM TARKA
06	GEORGE KNYSNA MOSSELBAAI/BAY RIVERSDAL/RIVERSDALE	30	ADELAIDE ALBANY ALEXANDRIA BATHURST BEDFORD FORT BEAUFORT SOMERSET-OOS/EAST STOCKENSTRUM
07	BREDASDORP CALEDON HEIDELBERG HERMANUS SWELLENLAMD	31	BARKLY-OOS/EAST ELLIOT INDWE MACLEAR WODEHOUSE
08	CERES MONTAGU ROBERTSON TULBAGH WORCESTER	32	ALBERT ALINAL-NOORD/NORTH HOFMEYR LADY GREY STEYNBURG VENTERSTAD
09	HOPEFIELD MALMESBURY PIKETBERG VREDENBURG	33	ALBERTON BENONI BOKSBURG GERMISTON KEMPTON PARK
10	CLANWILLIAM VANRHYNSDORP VREDENDAL	34	KING WILLIAM'S TOWN OOS-LONDEN/EAST LONDON
11	NAMAKWALAND	35	NATAL DURBAN INANDA PINETOWN
12	WALVISBAAI/BAY	36	LOWER TUGELA
14	KIRKWOOD PORT ELIZABETH UITENHAGE	37	CAMPERDOWN IXOFO KRANSKOP LIONS RIVER NEW HANOVER RICHMOND UMVOTI
16	CALVINIA SUTHERLAND WILLISTON	38	PIETERMARTITZBURG
17	BEAUFORT-WES/WEST FRASERBURG LAINGSBURG MURRAYSBURG PRINCE ALBERT VICTORIA WEST	39	ALFRED PORT SHEPSTONE
18	JANSENVILLE STETTLERVILLE WILLOWMORE	40	UMZINTO
19	ABERDEEN GRADOCK GRAAFF-REINET MIDDELBURG PEARSTON	41	IMPENDLE POLELA UNDERBERG
20	BRITSTOWN COLESBERG DE AAR HANOVER HOPESTOWN NOUPOORT PHILIPSTOWN RICHMOND	42	MOUNT CURRIE
		43	BERGVILLE DANNHAUSER DUNDEE ESTCOURT GLENCOE KLIPRIVIER MOORIVIER NEWCASTLE UTRECHT WEENEN
21	CARNARVON PRIESKA	44	BABANANGO NGOTSHE PAULPIETERSBURG VRYHEID
22	KIMBERLEY	45	ESHOWE HLABISA LOWER UMFOLOZI MTONJANENI MFUNZINI UBOMBO
		46	<u>TRANSVAAL</u> PRETORIA WONDERBOOM
		47	JOHANNESBURG RANDBURG
		48	ALBERTON BENONI BOKSBURG GERMISTON KEMPTON PARK
		49	BALFOUR BRAKPAN DELMAS HEIDELBERG HOVELDRIF/HIGHVELD RIDGE
		50	KRUGERSDORP OBERHOLZER RANDFONTEIN ROODEPOORT WESTONARIA
		51	BRITS BRONKHORSTSPRUIT CULLINAN
		52	VANDEBLOEPARK VEREENIGING
		53	BETHULIE ROUXVILLE SMITHFIELD ZASTRON
		54	SASOLBURG
		55	MARICO RUSTENBURG SWARTRUGGENS THABAZIMBI WARMBAD
		56	LETABA MESSINA PIETERSBURG POTGIETERSBURG SOUTHPANSBURG WATERBERG
		57	BARBERTON LYDENBURG NELSPRUIT PELGRIMSBRUS WITRIVIER
		58	BELFAST GROBLERSDAL MIDDELBURG WATERVAL-BOVEN WITBANK
		59	AMERSFOORT BETHAL CAROLINA ERMELO PIET RETIEF STANDERTON VOLKSRUST WAKKERSTROOM
		60	KLERKSDORP
		61	BLOEMHOF CHRISTIANA COLIGNY DELAREYVILLE KOSTER LICHTENBURG POTCHEFSTROOM SCHWEIZER-RENEKE VENTERSDORP WOLMARANSSTAD
		62	BOTHAVILLE BULTFOONTEIN HEILERON HEMVENMAN HOOPSTAD KOPPIES KROONSTAD PARYS THEUNISSEN VENTERSBURG VILJOENSKROON VREDEFORT WESSELSBRON
		63	BETHLEHEM FICKSDORP FOURIESBURG FRANKFORT HARRISMITH LINDLEY REITZ SENEKAL VREDE
		64	ODENDAALSBRUS VIRGINIA WELKOM
		65	BLOEMFONTEIN
		66	BRANDFORT CLOCOLAN DEWETSDORP EDENBURG EXCELSIOR JAGERSFONTEIN LADYBRAND MARQUARD PEIRUSBURG PHILIPPOLIS REDDERSBURG TROMPSBURG WEPENER WINBURG
		67	<u>NASIONALE STATE/ NATIONAL STATES</u>
		68	<u>CISKEI</u> MDANTISANE ZWELITSHA
		69	HEWU KEISKAMMAHOEK MIDDLEDRIFT PEDDIE VICTORIA-OOS/EAST
		70	<u>KWAZULU</u>
		71	EMBUMBULU NTUZUMA UMLAZI
		72	EMNAMBITHI EMZUMBE ENSELENI EZINGOLWENI HLABISA HLANGANANI INGWAVUMA INKANYESI KWA-MAPHUMULO MADADENI MAHLABATINI MSINGA NDWEDWE

NOMMER VAN STATISTIESE STREEK EN NAAM VAN DISTRIK	NUMBER OF STATISTICAL REGION AND NAME OF DISTRICT
72 NKANDLA NONGOMA NQUTU OKHAHLAMBA ONGOYE UBOMBO VULAMEHLO	
73 EMPUMALANGA VULINDLELA	
74 <u>GAZANKULU</u> GIYANI MALAMULELE MHALA RITAVI	
78 <u>LEBOWA</u> BOCHUM BOLOBEDU MAPULANENG MOKERONG MOUTSE NAPHUNO NEBO PHALABORWA SEKGOSESE SEKHUKHUNELAND SESHOGO THABAMCOPO	
80 <u>QWAQWA</u> WITSIESHOEK	
82 <u>KANGWANE</u> ERSTEHOEK	
85 <u>KWANDEBELE</u> MDUTJANA	

TABEL 1 - OPSOMMING VAN VERNAAMSTE STATISTIEKE VIR DIE JARE 1976 TOT 1980

TABLE 1 - SUMMARY OF PRINCIPAL STATISTICS FOR THE YEARS 1976 TO 1980

Item	Eenheid/ Unit	1980	1979	1978	1976	Item
BOERDERYEEENHEDE						FARMING UNITS
Getal		69 372	69 360	71 621	75 562	Number
Oppervlakte	1 000 ha	85 447	85 719	Area
WERKGELEENTHEID						EMPLOYMENT
Werknemers -						Employees -
Totaal	Getal/No.	1 238 401	1 320 036	1 292 785	1 279 922	Total
Gereelde werknemers	Getal/No.	669 086	691 017	679 193	683 449	Regular employees
Los werkers	Getal/No.	483 679	535 481	517 697	500 892	Casual employees
Huisbediendes	Getal/No.	85 636	93 538	95 895	95 581	Domestic servants
ARBEIDSVERGOEDING						REMUNERATION OF LABOUR
Kontant salarisse en lone -						Cash salaries and wages -
Totaal	R1 000	526 331	475 779	417 650	329 205	Total
Gereelde werknemers	R1 000	422 401	375 111	325 922	262 035	Regular employees
Los werknemers	R1 000	84 624	82 648	75 957	54 171	Casual employees
Huisbediendes	R1 000	19 306	18 021	15 772	12 999	Domestic servants
Waarde van rantsoene -						Value of rations -
Totaal	R1 000	152 564	135 911	225 660	91 775	Total
Gereelde werknemers	R1 000	125 531	110 481	93 572	74 252	Regular employees
Los werknemers	R1 000	17 864	16 972	14 816	11 590	Casual employees
Huisbediendes	R1 000	9 169	8 458	7 272	5 933	Domestic servants
PRODUKSIE VAN LANDEBOUWASSE						PRODUCTION OF AGRICULTURAL CROPS
Mielies -						Maize -
Totaal	t	9 369 678	8 509 249	8 745 596	7 519 330	Total
Houers en werknemers	t	9 136 690	8 344 167	8 586 171	7 154 175	Holders and employees
Nasionale state	t	232 988	165 082	159 425	365 155	National states
Graansorghum-houers en werknemers	t	545 282	458 473	500 362	264 214	Grain sorghum-holders and employees
Koring-houers en werknemers	t	1 925 521	1 801 532	1 756 888	1 896 924	Wheat-holders and employees
Hawer	t	163 232	182 231	Oats
Gars	t	92 831	67 684	Barley
Lusern	t	..	2 190 902	..	1 482 748	Lucerne
LEWENDE HAWE						LIVE-STOCK
Beeste -	1 000					Cattle -
Totaal	1 000	10 150	10 716	11 176	12 785	Total
Houers en werknemers	1 000	7 944	8 411	8 734	8 555	Holders and employees
Nasionale state	1 000	2 206	2 302	2 156	4 210	National states
Skape	1 000					Sheep
Totaal	1 000	28 541	28 821	28 828	30 995	Total
Houers en werknemers	1 000	28 291	28 558	28 602	28 148	Holders and employees
Nasionale state	1 000	250	263	226	2 844	National states
MOTORVOERTUIE, TREKKERS EN STROPERE	1 000					MOTOR VEHICLES, TRACTORS AND COMBINES
Motors	1 000	60	62	60	67	Motor cars
Vragmotors en bakkies	1 000	108	110	111	115	Lorries and trucks
Trekkers	1 000	173	174	173	174	Tractors
Stroperes	1 000	24	25	24	22	Combines
UITGAWES AANGEGAAN IN VERBAND MET BOERDERYBEDRYGWIGHEDE						EXPENDITURE INCURRED IN CONNECTION WITH FARMING OPERATIONS
Lopende uitgawes - Totaal	R1 000	2 458 439	2 045 314	1 720 637	1 337 880	Current expenditure - Total
Kapitaaluitgawes -						Capital expenditure -
Nuwe uitrustings aangekoop - Totaal	R1 000	402 973	306 710	329 891	274 565	New equipment purchased - Total
Nuwe geboue opgerig en ontwikkelingswerk onderneem - Totaal	R1 000	155 240	131 760	144 320	143 547	New buildings erected and development works undertaken - Total
BOERDERYSKULD	R1 000	2 465 071	2 265 127	2 038 234	1 661 941	FARMING DEBT

1/ Republieke van Transkei vanaf 1977, Bophuthatswana vanaf 1978 en Venda vanaf 1980 uitgesluit
 2/ Sluit in besonderhede van selfstandige Swart boere buite die nasionale state

1/ Republics of Transkei excluded with effect from 1977, Bophuthatswana from 1978 and Venda from 1980
 2/ Including particulars in respect of independent Black farmers outside the national states

TABEL 2 - GETAL PLASE, LOPEDE UITGAWES EN WAARDE VAN VERKOPE VOLGENS EIENAARSKAP

TABLE 2 - NUMBER OF FARMS, CURRENT EXPENDITURE AND VALUE OF SALES ACCORDING TO OWNERSHIP

Eienaarskap Ownership	Besonderhede van plase Details of farms Getal Number	Totale lopende uitgawes Total current expenditure	Totaal Total	Waarde van verkope/Value of sales			
				Akkerbou en bosbou Field crops and forestry	Tuinbou Horticulture	Lewende hawe Live-stock	Pluivee en vee- teeltprodukte Poultry and live- stock products
				R	R	R	R
HOOPSTREEK/MAIN REGION 01							
Eenmansake en vennootskappe Individuals and partnerships	1 012	42 520 356	71 146 193	4 167 580	45 181 750	7 645 155	14 151 708
Maatskappye en koöperasies Companies and co-operatives	270	53 981 026	79 350 765	3 374 132	28 170 362	9 774 245	38 032 026
Openbare korporasies Public corporations	0	0	0	0	0	0	0
Munisipaliteite, plaaslike owerhede en regeringsondernemings Municipalities, local authorities and government enterprises	13	322 722	744 551	641 423	103 128	0	0
Ander Other	11	887 709	1 342 313	143 978	561 856	519 190	117 289
TOTAAL/TOTAL	1 306	96 711 813	152 583 822	8 327 113	74 017 096	17 938 590	52 361 023
HOOPSTREEK/MAIN REGION 02							
Eenmansake en vennootskappe Individuals and partnerships	8 734	216 474 567	371 831 196	91 180 853	167 315 990	54 085 233	59 249 120
Maatskappye en koöperasies Companies and co-operatives	704	87 778 853	152 238 416	19 760 051	96 547 619	13 958 960	21 971 786
Openbare korporasies Public corporations	0	0	0	0	0	0	0
Munisipaliteite, plaaslike owerhede en regeringsondernemings Municipalities, local authorities and government enterprises	49	1 106 343	4 973 587	4 785 812	113 019	27 830	46 926
Ander Other	29	3 167 371	5 961 878	52 609	5 473 629	150 931	284 709
TOTAAL/TOTAL	9 516	308 527 134	535 005 077	115 779 325	269 450 257	68 222 954	81 552 541

TABEL 2 - GETAL PLASE, LOPENDE UITGAWES EN WAARDE VAN VERKOPE VOLGENS EIGENAARSKAP (VERVOLG)

TABLE 2 - NUMBER OF FARMS, CURRENT EXPENDITURE AND VALUE OF SALES ACCORDING TO OWNERSHIP (CONTINUED)

Eienaarskap Ownership	Besonderhede van plase Details of farms Getal Number	Totale lopende uitgawes Total current expenditure	Totaal Total	Waarde van verkope/Value of sales			
				Akkerbou en bosbou Field crops and forestry	Tuinbou Horticulture	Lewende hawe Live-stock	Pluimvee en vee- teeltprodukte Poultry and live- stock products
				R	R	R	R
HOOFSTREEK/MAIN REGION 03							
Eemansake en vennootskappe Individuals and partnerships	730	10 123 376	21 649 657	1 060 260	9 875 726	2 768 729	7 944 942
Maatskappye en koöperasies Companies and co-operatives	41	6 526 891	10 715 769	73 581	3 761 515	1 167 967	5 712 706
Openbare korporasies Public corporations	0	0	0	0	0	0	0
Munisipaliteite, plaaslike owerhede en regeringsondernemings Municipalities, local authorities and government enterprises	2	104 634	396 598	13 750	167 332	61 243	154 273
Ander Other	3						
TOTAAL/TOTAL	776	15 754 901	32 762 024	1 147 591	13 804 573	3 997 939	13 811 921
HOOFSTREEK/MAIN REGION 04							
Eemansake en vennootskappe Individuals and partnerships	4 477	67 210 706	123 563 802	4 551 243	3 501 169	64 258 786	51 252 604
Maatskappye en koöperasies Companies and co-operatives	296	9 984 844	21 995 931	1 106 359	437 948	11 219 296	9 232 328
Openbare korporasies Public corporations	0	0	0	0	0	0	0
Munisipaliteite, plaaslike owerhede en regeringsondernemings Municipalities, local authorities and government enterprises	6	337 583	169 813	8 125	0	97 120	64 568
Ander Other	12	229 498	392 817	14 350	920	164 506	213 041
TOTAAL/TOTAL	4 791	77 762 631	146 122 363	5 680 077	3 940 037	75 739 708	60 762 541

TABEL 2 - GETAL PLASE, LOPENDE UITGAWES EN WAARDE VAN VERKOPPE VOLGENS EIENAARSKAP (VERVOLG)

TABLE 2 - NUMBER OF FARMS, CURRENT EXPENDITURE AND VALUE OF SALES ACCORDING TO OWNERSHIP (CONTINUED)

Eienaarskap Ownership	Besonderhede van plase Details of farms Getal Number	Totale lopende uitgawes Total current expenditure	Totaal Total	Waarde van verkope/Value of sales			
				Akkerbou en bosbou Field crops and forestry	Tuintou Horticulture	Lewende hawe Live-stock	Pluimvee en vee- teeltprodukte Poultry and live- stock products
				R	R	R	R
HOOFSTREEK/MAIN REGION 05							
Eenmansake en vennootskappe Individuals and partnerships	6 960	137 839 249	251 790 595	87 969 511	22 850 763	114 572 014	26 598 307
Maatskappye en koöperasies Companies and co-operatives	300	17 346 785	31 541 057	10 469 155	3 756 106	15 221 978	2 093 818
Openbare korporasies Public corporations	0	0	0	0	0	0	0
Munisipaliteite, plaaslike owerhede en regeringsondernemings Municipalities, local authorities and government enterprises	10	121 081	185 200	81 762	42 746	18 449	42 243
Ander Other	21	733 623	1 057 500	95 785	9 282	864 963	87 470
TOTAAL/TOTAL	7 291	156 046 735	284 574 352	98 616 213	26 658 897	130 477 404	28 821 838
HOOFSTREEK/MAIN REGION 06							
Eenmansake en vennootskappe Individuals and partnerships	5 407	93 964 254	184 917 392	9 942 086	11 823 235	51 058 039	72 094 632
Maatskappye en koöperasies Companies and co-operatives	191	14 130 609	24 223 597	531 303	4 966 915	7 467 477	11 257 902
Openbare korporasies Public corporations	5	828 560	1 352 729	35 936	774 571	348 160	194 062
Munisipaliteite, plaaslike owerhede en regeringsondernemings Municipalities, local authorities and government enterprises	21	502 671	829 290	695 540	5 952	64 872	62 926
Ander Other	18	185 445	57 904	14 476	1 031	158 039	144 358
TOTAAL/TOTAL	5 642	109 611 539	211 641 512	11 219 341	17 572 704	99 096 587	83 753 880

TABEL 2 - GEPAL PLASE, LOFENDE UITGAWES EN WAARDE VAN VERKOPE VOLGENS EIENAARSKAP (VERVOLG)

TABLE 2 - NUMBER OF FARMS, CURRENT EXPENDITURE AND VALUE OF SALES ACCORDING TO OWNERSHIP (CONTINUED)

Eienaarskap Ownership	Besonderhede van plase Details of farms Getal. Number	Totale lopende uitgawes Total current expenditure	Totaal Total	Waarde van verkope/Value of sales			
				Akkerbou en bosbou Field crops and forestry	Tuinbou Horticulture	Lewende hawe Live-stock	Fluïwê en vee- teeltprodukte Poultry and live- stock products
				R	R	R	R
HOOFSTREEK/MAIN REGION 07							
Eenmansake en vennootskappe Individuals and partnerships	2 272	70 239 157	116 083 893	69 544 566	9 608 531	16 119 050	20 821 746
Maatskappye en koöperasies Companies and co-operatives	425	59 355 340	124 953 673	96 360 222	5 645 232	13 344 897	9 603 322
Openbare korporasies Public corporations	0	0	0	0	0	0	0
Munisipaliteite, plaaslike owerhede en regeringsondernemings Municipalities, local authorities and government enterprises	8	482 551	1 106 335	990 454	461	55 840	59 580
Ander Other	37	1 217 798	2 727 382	2 314 698	15 237	150 329	247 113
TOTAAL/TOTAL	2 742	131 294 846	244 871 263	169 209 940	15 269 461	29 670 116	30 721 766
HOOFSTREEK/MAIN REGION 08							
Eenmansake en vennootskappe Individuals and partnerships	3 583	110 343 417	177 211 871	73 395 427	11 127 728	63 330 141	29 358 575
Maatskappye en koöperasies Companies and co-operatives	664	62 701 889	123 480 716	92 387 558	9 528 799	12 599 531	8 964 828
Openbare korporasies Public corporations	0	0	0	0	0	0	0
Munisipaliteite, plaaslike owerhede en regeringsondernemings Municipalities, local authorities and government enterprises	30	750 787	4 473 719	4 319 663	1 526	98 456	54 074
Ander Other	50	2 560 709	3 907 492	2 654 833	257 785	763 061	231 815
TOTAAL/TOTAL	4 327	176 356 802	309 073 798	172 757 481	20 915 836	76 791 189	38 609 292

TABEL 2 - GETAL PLASE, LOPENDE UITGAWES EN WAARDE VAN VERKOPE VOLGENS EIGENAARSKAP (VERVOLG)

TABLE 2 - NUMBER OF FARMS, CURRENT EXPENDITURE AND VALUE OF SALES ACCORDING TO OWNERSHIP (CONTINUED)

Eigenaarskap Ownership	Besonderhede van plase Details of farms Getal Number	Totale lopende uitgawes Total current expenditure	Totaal Total	Waarde van verkope/Value of sales			
				Akkerbou en bosbou Field crops and forestry	Tuinbou Horticulture	Lewende hawe Live-stock	Pluimvee en vee- teeltprodukte Poultry and live- stock products
				R	R	R	R
HOOFSTREEK/MAIN REGION 09							
Eenmansake en vennootskappe Individuals and partnerships	4 350	136 402 923	197 182 000	109 354 172	27 612 570	27 705 407	32 509 851
Maatskappye en koöperasies Companies and co-operatives	416	94 696 602	160 719 309	28 455 236	16 631 993	36 565 841	79 066 239
Openbare korporasies Public corporations	0	0	0	0	0	0	0
Munisipaliteite, plaaslike owerhede en regeringsondernemings Municipalities, local authorities and government enterprises	10	939 568	885 220	162 107	7 017	680 105	35 991
Ander Other	15	369 743	1 058 062	778 497	46 032	205 389	28 144
TOTAAL/TOTAL	4 791	232 408 836	359 844 391	138 750 012	44 297 612	65 156 742	111 640 225
HOOFSTREEK/MAIN REGION 10							
Eenmansake en vennootskappe Individuals and partnerships	11 365	296 129 657	467 208 162	251 366 141	67 918 960	108 428 454	39 494 607
Maatskappye en koöperasies Companies and co-operatives	2 119	146 051 449	285 375 979	137 817 229	91 832 263	43 841 910	11 884 577
Openbare korporasies Public corporations	0	0	0	0	0	0	0
Munisipaliteite, plaaslike owerhede en regeringsondernemings Municipalities, local authorities and government enterprises	70	2 662 051	12 845 001	12 301 775	283 588	164 377	95 261
Ander Other	47	1 146 125	1 577 792	1 226 174	142 469	131 139	78 010
TOTAAL/TOTAL	12 601	445 989 282	767 006 934	402 711 319	160 177 280	152 565 880	51 552 455

TABEL 2 - GETAL PLASE, LOPENDE UITGAWES EN WAARDE VAN VERKOPE
VOLGENS EIENAARSKAP (VERVOLG)

TABLE 2 - NUMBER OF FARMS, CURRENT EXPENDITURE AND VALUE OF SALES
ACCORDING TO OWNERSHIP (CONTINUED)

Eienaarskap Ownership	Besonderhede van plase Details of farms Getal Number	Totale lopende uitgawes Total current expenditure	Totaal Total	Waarde van verkope/Value of sales			
				Akkerbou en bosbou Field crops and forestry	Tuinbou Horticulture	Lewende hawe Live-stock	Fluimvee en vee- teeltprodukte Poultry and live- stock products
		R	R	R	R	R	R
HOOFSTREEK/MAIN REGION 11							
Eenmansake en vennootskappe Individuals and partnerships	11 226	465 286 252	722 949 147	522 980 943	13 165 596	121 772 900	65 029 708
Maatskappye en koöperasies Companies and co-operatives	1 102	142 977 345	227 781 853	169 478 500	9 348 848	31 120 793	17 833 712
Openbare korporasies Public corporations	2						
Munisipaliteite, plaaslike owerhede en regeringsondernemings Municipalities, local authorities and government enterprises	19	558 564	1 029 626	599 062	151 582	211 408	67 574
Ander Other	20	999 458	1 565 020	1 224 830	130 030	165 866	44 294
TOTAAL/TOTAL	12 367	609 821 619	953 325 646	694 283 335	22 796 056	153 270 967	82 975 288
HOOFSTREEK/MAIN REGION 12							
Eenmansake en vennootskappe Individuals and partnerships	3 090	85 675 620	135 773 473	65 031 023	3 012 022	42 451 732	25 278 696
Maatskappye en koöperasies Companies and co-operatives	112	11 064 727	24 705 636	5 589 196	462 311	16 701 308	1 952 821
Openbare korporasies Public corporations	1						
Munisipaliteite, plaaslike owerhede en regeringsondernemings Municipalities, local authorities and government enterprises	7	208 549	361 109	214 982	21 569	97 532	27 026
Ander Other	13	203 729	429 381	203 965	0	68 272	157 144
TOTAAL/TOTAL	3 222	97 152 625	161 269 599	71 039 166	3 495 902	59 318 844	27 415 687

TABEL 2 - GETAL PLASE, LOPENDE UITGAWES EN WAARDE VAN VERKOPE
VOLGENS EIENAARSKAP (AFGESLUIT)

TABLE 2 - NUMBER OF FARMS, CURRENT EXPENDITURE AND VALUE OF SALES
ACCORDING TO OWNERSHIP (CONCLUDED)

Eienaarskap Ownership	Besonderhede van plase Details of farms Getal Number	Totale lopende uitgawes Total current expenditure	Totaal Total	Waarde van verkope/Value of sales			
				Akkerbou en bosbou Field crops and forestry	Tuinbou Horticulture	Lewende hawe Live-stock	Pluimvee en vee- teeltprodukte Poultry and live- stock products
				R	R	R	R
TOTAAL/TOTAL R.S.A.							
Eenmansake en vennootskappe Individuals and partnerships	63 206	1 731 209 534	2 841 307 981	1 290 543 805	392 994 040	713 995 640	443 774 496
Maatskappye en koöperasies Companies and co-operatives	5 640	706 596 360	1 267 082 701	565 402 522	271 089 911	212 984 203	217 606 065
Openbare korporasies Public corporations	8	914 942	1 528 135	51 925	923 136	350 200	202 874
Munisipaliteite, plaaslike owerhede en regeringsondernemings Municipalities, local authorities and government enterprises	242	7 913 250	27 428 285	24 784 716	582 023	1 513 949	547 597
Ander Other	276	11 804 677	20 733 899	8 737 945	6 805 601	3 402 928	1 787 425
TOTAAL/TOTAL	69 372	2 458 438 763	4 158 081 001	1 889 520 913	672 394 711	932 246 920	663 918 457

3 - WERKGELEENTHEID, SALARISSE EN LONE, WAARDE VAN RANTSOEHE
TABEL 3.1 - WERKGELEENTHEID, ALLE WERKNEMERS

3 - EMPLOYMENT, SALARIES AND WAGES, VALUE OF RATIONS
TABLE 3.1 - EMPLOYMENT, ALL EMPLOYEES

LANDROSDISTRIK (RAGISTERIAL DISTRICT)	GEREEDE WERKNEMERS - GETAL REGULAR EMPLOYEES - NUMBER					LOS WERKNEMERS - GETAL CASUAL EMPLOYEES - NUMBER					HUISBEDIENDES - GETAL DOMESTIC SERVANTS - NUMBER				
	TOTAAL TOTAL	BLANKES WHITES	KLEURLINGE COLOURED	ASIERS ASIANS	SWARTES BLACKS	TOTAAL TOTAL	BLANKES WHITES	KLEURLINGE COLOURED	ASIERS ASIANS	SWARTES BLACKS	TOTAAL TOTAL	KLEURLINGE COLOURED	ASIERS ASIANS	SWARTES BLACKS	
KAAP/CAPE	140	11	23	0	106	5	0	5	0	0	7	6	0	1	
WYNBERG	1 712	102	1 196	1	413	353	2	243	0	108	72	56	0	16	
SIMONSTAD/SIMONSTOWN	142	7	62	0	73	7	0	7	0	0	5	3	0	0	
BELLVILLE	2 067	110	1 273	1	675	517	0	517	0	0	90	88	0	2	
STATISTIESE STREEK STATISTICAL REGION	01	4 061	238	2 554	2	1 267	882	2	772	0	108	172	153	0	19
STELLEBOOSCH	3 433	181	2 693	3	556	1 563	16	1 515	0	32	272	258	1	13	
KUILSRIVIER/RIVER	822	28	545	1	248	236	8	228	0	0	53	49	0	4	
SOMERSET-WES/WEST	1 450	79	942	0	429	410	1	351	0	58	68	65	0	3	
STRAND	1 735	6	87	0	42	98	0	98	0	0	11	11	0	0	
PAARL	7 140	378	5 523	0	1 239	3 725	23	3 576	0	126	483	452	0	31	
WELLINGTON	2 370	61	2 091	0	218	1 722	2	1 584	0	136	194	185	0	9	
STATISTIESE STREEK STATISTICAL REGION	02	15 350	733	11 881	4	2 732	7 754	50	7 352	0	352	1 081	1 020	1	60
UNIONDALE	951	32	862	0	57	690	0	664	0	26	120	113	0	7	
JUBERTINA	1 820	64	1 374	0	382	1 852	5	1 500	0	347	141	120	0	21	
HUMANSDORP	1 688	93	1 068	0	527	1 217	1	815	0	401	295	206	0	89	
HANKEY	2 443	52	1 359	0	1 032	2 432	0	1 755	0	877	265	133	0	132	
STATISTIESE STREEK STATISTICAL REGION	04	6 902	241	4 663	0	1 998	6 391	6	4 734	0	1 651	821	572	0	249
DUITSHOORN	2 742	91	2 620	0	31	2 176	0	2 173	0	3	285	278	0	7	
CALITZDORP	803	10	777	0	16	682	3	679	0	0	96	96	0	0	
LADISMITK	2 099	36	1 933	0	130	1 820	4	1 785	1	30	172	155	0	17	
STATISTIESE STREEK STATISTICAL REGION	05	5 644	137	5 330	0	177	4 678	7	4 637	1	33	553	529	0	24
KNYSNA	1 308	226	897	0	185	265	4	231	0	30	168	147	0	21	
GEORGE	3 352	162	2 957	0	233	3 073	5	2 967	0	101	337	318	0	19	
MOSSELBAAI/MOSSEL BAY	735	14	697	0	24	1 479	3	1 160	0	256	148	147	0	1	
RIVERSDAL/RIVERSDALE	1 568	52	1 325	0	191	2 104	11	1 619	0	474	223	219	0	4	
STATISTIESE STREEK STATISTICAL REGION	06	6 963	454	5 876	0	633	6 861	23	5 977	0	861	876	831	0	45
CALEDON	7 686	537	5 512	0	1 637	3 856	21	2 829	0	1 006	446	434	1	11	
HERMANUS	381	12	338	0	31	499	7	426	0	66	27	26	0	1	
BREDASDORP	1 019	66	907	0	46	752	8	480	0	264	170	167	0	3	
SWELLENDAM	3 480	155	3 016	0	309	2 980	13	2 397	0	570	395	373	0	22	
HEIDELBERG(KAAP/CAPE)	863	32	727	0	104	1 053	5	902	0	146	147	137	0	10	
STATISTIESE STREEK STATISTICAL REGION	07	13 429	802	10 500	0	2 127	9 140	54	7 034	0	2 052	1 185	1 137	1	47

3 - WERKGELEENTHEID, SALARISSE EN LONE, WAARDE VAN RANTSOENE
TABEL 3.1 - WERKGELEENTHEID, ALLE WERKNEMERS

3 - EMPLOYMENT, SALARIES AND WAGES, VALUE OF RATIONS
TABLE 3.1 - EMPLOYMENT, ALL EMPLOYEES

LANDROSDISTRIK MAGISTERIAL DISTRICT	GEREELEDE WERKNEMERS - GETAL REGULAR EMPLOYEES - NUMBER					LOS WERKNEMERS - GETAL CASUAL EMPLOYEES - NUMBER					HUISBEDIENDES - GETAL DOMESTIC SERVANTS - NUMBER				
	TOTAAL TOTAL	BLANKES WHITES	KLEURLINGE COLOURED	ASIERS ASIANS	SWARTES BLACKS	TOTAAL TOTAL	BLANKES WHITES	KLEURLINGE COLOURED	ASIERS ASIANS	SWARTES BLACKS	TOTAAL TOTAL	KLEURLINGE COLOURED	ASIERS ASIANS	SWARTES BLACKS	
WORCESTER	10 398	328	8 420	0	1 650	4 022	7	3 353	0	662	715	669	0	46	
CERES	4 888	255	4 372	0	261	3 264	8	2 372	0	884	284	283	0	1	
TULBAGH	2 951	124	2 619	0	208	1 726	15	1 653	0	58	175	170	0	5	
ROBERTSON	3 506	115	3 128	0	263	1 874	3	1 833	0	38	290	277	0	13	
MONTAGU	1 687	37	1 598	0	52	1 289	4	1 228	0	57	170	167	0	3	
STATISTIESE STREEK STATISTICAL REGION	08 08	23 630	859	20 137	0	2 434	12 175	37	10 439	0	1 699	1 634	1 566	0	68
MALMESBURY	5 606	234	4 124	0	1 248	3 024	9	2 138	0	877	636	631	0	5	
HOPEFIELD	310	12	274	0	24	432	2	278	0	152	35	35	0	0	
PIKETHEG	2 621	91	2 458	0	72	3 890	11	3 167	0	712	402	399	0	3	
VREDENBURG	320	11	237	0	72	289	0	64	0	225	21	21	0	0	
STATISTIESE STREEK STATISTICAL REGION	09 09	8 857	348	7 093	0	1 416	7 635	22	5 647	0	1 966	1 094	1 086	0	8
CLANWILLIAM	2 920	129	2 712	0	79	3 006	12	2 892	0	102	324	319	0	5	
VREDENDAL	2 431	60	2 270	0	101	2 528	3	2 498	0	27	275	275	0	0	
VANRHYNSDORP	891	27	832	0	32	1 287	1	1 230	0	56	94	94	0	0	
STATISTIESE STREEK STATISTICAL REGION	10 10	6 242	216	5 814	0	212	6 821	16	6 620	0	185	693	688	0	5
NAMAKWALAND	884	29	786	0	69	1 073	0	1 044	0	29	115	115	0	0	
STATISTIESE STREEK STATISTICAL REGION	11 11	884	29	786	0	69	1 073	0	1 044	0	29	115	115	0	0
WALVISBAAI/BAY	16	0	0	0	16	0	0	0	0	0	0	0	0	0	
STATISTIESE STREEK STATISTICAL REGION	12 12	16	0	0	0	16	0	0	0	0	0	0	0	0	
PORT ELIZABETH	921	57	57	0	807	136	1	10	0	125	118	12	0	106	
UITENHAGE	1 491	36	399	0	1 056	837	2	301	0	534	298	93	0	205	
KIRKWOOD	2 582	75	406	0	2 101	1 366	4	164	0	1 198	332	36	0	296	
STATISTIESE STREEK STATISTICAL REGION	14 14	4 994	168	862	0	3 964	2 339	7	475	0	1 857	748	141	0	607
CALVINIA	1 475	33	1 396	0	46	2 439	1	1 876	0	562	350	349	0	1	
WILLISTON	431	4	422	0	5	828	1	787	0	40	130	130	0	0	
SUTHERLAND	488	14	471	0	3	947	0	667	0	280	105	104	0	1	
STATISTIESE STREEK STATISTICAL REGION	16 16	2 394	51	2 289	0	54	4 214	2	3 330	0	882	585	583	0	2
BEAUFORT-WES/WEST	993	32	930	0	31	998	2	881	0	115	259	255	0	4	

3 - WERKGELEENTHEID, SALARISSE EN LONE, WAARDE VAN RANTSOEME
 TABEL 3.1 - WERKGELEENTHEID, ALLE WERKNEMERS

3 - EMPLOYMENT, SALARIES AND WAGES, VALUE OF RATIONS
 TABLE 3.1 - EMPLOYMENT, ALL EMPLOYEES

LANDDROSDISTRIK MAGISTERIAL DISTRICT	GEREEFDE WERKNEMERS - GETAL REGULAR EMPLOYEES - NUMBER					LOS WERKNEMERS - GETAL CASUAL EMPLOYEES - NUMBER					HUISBEDIENDES - GETAL DOMESTIC SERVANTS - NUMBER				
	TOTAAL TOTAL	BLANKES WHITES	KLEURLINGE COLOURED	ASIERS ASIANS	SWARTES BLACKS	TOTAAL TOTAL	BLANKES WHITES	KLEURLINGE COLOURED	ASIERS ASIANS	SWARTES BLACKS	TOTAAL TOTAL	KLEURLINGE COLOURED	ASIERS ASIANS	SWARTES BLACKS	
FRASERBURG	613	11	591	0	11	1 024	2	717	0	305	280	279	0	1	
LAINGSBURG	750	14	726	0	10	927	0	783	0	144	105	105	0	0	
PRINCE ALBERT	704	28	662	0	14	979	4	929	0	46	123	121	0	2	
VICTORIA-WEST	732	18	654	0	60	722	1	593	0	128	243	228	0	15	
MURRAYSBURG	472	12	410	0	50	568	1	437	0	130	138	125	0	13	
STATISTIESE STREEK STATISTICAL REGION	17 17	4 264	115	3 973	0	176	5 218	10	4 340	0	868	1 148	1 113	0	35
JAMSENVILLE	759	23	507	0	229	695	0	357	0	338	202	141	0	61	
STEYTLERVILLE	568	6	456	0	106	522	1	415	0	106	141	113	0	28	
WILLOWMORE	757	7	681	0	69	690	0	654	0	36	137	135	0	2	
STATISTIESE STREEK STATISTICAL REGION	18 18	2 084	36	1 644	0	404	1 907	1	1 426	0	480	480	389	0	91
ABERDEEN	715	17	614	0	84	782	0	431	0	351	198	181	0	17	
GRAAFF-REINET	1 201	40	913	1	247	680	2	470	0	208	351	280	0	71	
PEARSTON	418	6	236	0	176	259	0	140	0	119	133	76	0	57	
CRADOCK	1 787	43	401	0	1 337	1 178	1	130	0	1 047	493	108	0	385	
MIDDELBURG(KAAP/CAPE)	1 154	20	557	23	554	561	2	192	0	367	322	104	0	218	
STATISTIESE STREEK STATISTICAL REGION	19 19	5 269	126	2 721	24	2 398	3 460	5	1 363	0	2 092	1 497	749	0	748
HOPETOWN	784	14	649	0	121	840	1	803	0	36	226	204	0	22	
BRITSTOWN	549	15	485	0	49	565	0	549	0	16	193	183	0	10	
DE AAR	278	8	234	1	35	320	0	319	0	1	107	94	0	13	
PHILIPSTOWN	594	7	450	0	137	551	1	461	0	89	257	191	0	66	
RICHMOND(KAAP/CAPE)	664	28	490	0	146	472	1	420	0	51	226	169	0	57	
HANOVER	366	18	157	0	191	214	0	145	0	69	125	47	0	78	
COLESBERG	679	19	235	0	425	607	1	407	0	199	254	83	0	171	
NOUPOORT	165	6	63	0	96	175	0	88	0	27	68	18	0	50	
STATISTIESE STREEK STATISTICAL REGION	20 20	4 079	115	2 763	1	1 200	3 684	4	3 192	0	488	1 456	989	0	467
PRIESKA	947	26	835	0	86	1 017	1	973	0	43	250	241	0	9	
CARNARVON	754	19	718	0	17	895	0	870	0	25	208	200	0	8	
STATISTIESE STREEK STATISTICAL REGION	21 21	1 701	45	1 553	0	103	1 912	1	1 843	0	68	458	441	0	17
KIMBERLEY	1 236	32	303	0	901	630	0	187	0	443	154	54	1	99	
STATISTIESE STREEK STATISTICAL REGION	22 22	1 236	32	303	0	901	630	0	187	0	443	154	54	1	99

3 - WERKGELEENTHEID, SALARISSE EN LOME, WAARDE VAN RANTSOENE
TABEL 3.1 - WERKGELEENTHEID, ALLE WERKNEMERS

3 - EMPLOYMENT, SALARIES AND WAGES, VALUE OF RATIONS
TABLE 3.1 - EMPLOYMENT, ALL EMPLOYEES

LANDROSDISTRIK MAGISTERIAL DISTRICT	GEREEDE WERKNEMERS - GETAL REGULAR EMPLOYEES - NUMBER					LOS WERKNEMERS - GETAL CASUAL EMPLOYEES - NUMBER					HUISBEDIENDES - GETAL DOMESTIC SERVANTS - NUMBER				
	TOTAAL TOTAL	BLANKES WHITES	KLEURLINGE COLOURED	ASIERS ASIANS	SWARTES BLACKS	TOTAAL TOTAL	BLANKES WHITES	KLEURLINGE COLOURED	ASIERS ASIANS	SWARTES BLACKS	TOTAAL TOTAL	KLEURLINGE COLOURED	ASIERS ASIANS	SWARTES BLACKS	
GORDONIA KENHARDT	6 279 1 139	80 31	5 221 1 025	0 0	978 83	13 130 2 686	5 1	11 146 2 355	0 0	1 979 330	960 187	889 181	0 0	71 6	
STATISTIESE STREEK STATISTICAL REGION	23 23	7 418	111	6 246	0	1 061	15 816	6	13 501	0	2 309	1 147	1 070	0	77
KURUMAN POSTMASBURG HAY	1 626 1 529 1 090	17 31 7	177 549 791	4 0 0	1 428 949 292	786 800 1 335	0 1 0	118 416 1 082	0 0 0	668 383 253	369 423 342	46 154 251	1 0 0	322 269 91	
STATISTIESE STREEK STATISTICAL REGION	24 24	4 245	55	1 517	4	2 669	2 921	1	1 616	0	1 304	1 134	451	1	682
VRYBURG & MAFEKING	5 129 2 619	42 39	141 19	3 0	4 943 2 561	8 372 4 323	0 0	24 2	0 0	8 348 4 321	965 394	23 0	0 0	942 394	
STATISTIESE STREEK STATISTICAL REGION	25 25	7 748	81	160	3	7 504	12 695	0	26	0	12 669	1 359	23	0	1 336
HERBERT BARKLY-WES/WEST WARRENTON HARTSWATER	1 923 1 598 927 2 956	27 30 8 29	944 238 88 233	0 0 0 0	952 1 330 831 2 694	2 646 2 015 1 779 5 845	0 0 1 0	1 552 62 52 242	0 0 0 0	1 094 1 953 1 726 5 603	363 231 152 504	210 28 11 37	0 0 0 1	153 203 141 466	
STATISTIESE STREEK STATISTICAL REGION	26 26	7 404	94	1 503	0	5 807	12 285	1	1 908	0	10 376	1 250	286	1	963
OOS-LONDEN/EAST LONDON KING WILLIAM'S TOWN	2 902 800	85 23	11 14	0 0	2 806 763	2 715 369	0 2	0 0	0 0	2 715 367	513 168	3 1	0 0	510 167	
STATISTIESE STREEK STATISTICAL REGION	28 28	3 702	108	25	0	3 569	3 084	2	0	0	3 082	681	4	0	677
KOMGA STUTTERHEIM CATHCART QUEENSTOWN TARKA STENKSTROOM MOLTENO	1 034 1 479 1 138 1 371 885 523 584	16 54 15 20 10 6 4	5 15 5 27 43 11 28	0 0 9 0 0 0 0	1 013 1 410 1 129 1 324 832 506 532	838 1 064 745 746 542 410 517	0 0 0 0 0 1 0	0 0 1 16 39 17 16	0 0 0 0 0 0 0	838 1 064 744 730 503 392 501	235 280 301 399 337 181 223	0 2 4 9 13 2 2	0 0 0 0 0 0 0	235 278 297 390 324 179 221	
STATISTIESE STREEK STATISTICAL REGION	29 29	7 014	125	134	9	6 746	4 862	1	89	0	4 772	1 956	32	0	1 924
ALBANY SOMERSET-OOS/EAST ALEXANDRIA BATHURST	2 760 1 778 2 537 1 690	41 28 57 24	125 528 75 13	0 0 0 0	2 594 1 222 2 405 1 653	2 948 1 095 2 711 1 356	0 1 1 0	52 235 38 4	0 0 0 0	1 996 859 2 672 1 352	524 463 399 252	21 135 14 0	0 0 0 0	503 328 385 252	

3 - WERKGELEENTHEID, SALARISSE EN LONE, WAARDE VAN RANTSOENE
 TABEL 3-7 - WERKGELEENTHEID, ALLE WERKNEMERS

3 - EMPLOYMENT, SALARIES AND WAGES, VALUE OF RATIONS
 TABLE 3-1 - EMPLOYMENT, ALL EMPLOYEES

LANDROSDISTRIK MAGISTERIAL DISTRICT	GEEËLDE WERKNEMERS - GETAL REGULAR EMPLOYEES - NUMBER					LOS WERKNEMERS - GETAL CASUAL EMPLOYEES - NUMBER					HUISBEDIENDES - GETAL DOMESTIC SERVANTS - NUMBER			
	TOTAAL TOTAL	BLANKES WHITES	KLEURLINGE COLOURED	ASIERS ASIANS	SWARTES BLACKS	TOTAAL TOTAL	BLANKES WHITES	KLEURLINGE COLOURED	ASIERS ASIANS	SWARTES BLACKS	TOTAAL TOTAL	KLEURLINGE COLOURED	ASIERS ASIANS	SWARTES BLACKS
FORT BEAUFORT	827	14	41	0	772	508	0	20	0	488	165	6	0	159
ADELAIDE	796	21	62	0	713	332	1	34	0	297	193	13	2	178
BEDFORD	1 022	20	169	0	833	563	4	74	0	485	247	42	0	205
o PEDDIE (KAAP/CAPE)	827	18	0	0	809	620	0	0	0	620	85	0	0	85
+ VICTORIA-DOS/EAST (KP/CP)	474	16	1	0	457	241	0	4	0	237	68	0	0	68
- STOCKENSTROM	717	13	74	0	630	757	1	55	0	701	148	10	0	138
STATISTIESE STREEK 30 STATISTICAL REGION 30	13 428	252	1 088	0	12 088	10 231	8	316	0	9 707	2 544	241	2	2 301
BARKLY-DOS /EAST	1 398	9	15	0	1 374	788	1	115	0	672	524	4	0	520
WODEHOUSE	1 351	25	30	0	1 296	1 707	0	53	0	1 654	465	7	0	458
INDWE	487	10	1	0	476	943	0	5	0	938	172	0	0	172
ELLIOT	1 084	15	2	0	1 067	1 258	0	10	0	1 248	291	0	0	291
MACLEAR	1 230	17	2	0	1 211	1 886	0	0	0	1 886	344	0	0	344
STATISTIESE STREEK 51 STATISTICAL REGION 31	5 550	76	50	0	5 424	6 582	1	183	0	6 398	1 796	11	0	1 785
LADY GREY	725	10	31	0	684	504	0	7	0	497	213	7	0	206
ALIWAL-MOORO/NORTH	1 371	10	51	0	1 310	989	2	6	0	981	450	8	0	442
ALBERT	1 200	11	32	0	1 157	1 071	3	122	0	946	466	10	0	456
VENTERSTAD	397	1	78	0	318	558	0	136	0	422	183	24	0	159
STEYNSBURG	554	12	110	0	532	494	0	196	0	300	245	52	0	193
HOFMEYR	478	17	112	0	349	371	1	56	0	314	141	39	0	102
STATISTIESE STREEK 32 STATISTICAL REGION 32	4 725	61	414	0	4 250	3 987	6	521	0	3 460	1 698	140	0	1 558
*** KAAP / CAPE ***	179 033	5 708	101 879	47	71 399	159 237	273	88 772	7	70 191	28 315	14 414	7	13 894
OURBAN	302	4	0	8	290	30	0	0	2	28	10	0	4	6
PINETOWN (NATAL)	580	26	1	45	508	348	0	0	8	340	24	0	2	22
IMANDA (NATAL)	5 474	123	3	775	4 573	6 304	0	1	25	6 278	215	0	49	156
STATISTIESE STREEK 35 STATISTICAL REGION 35	6 356	153	4	828	5 371	6 682	0	1	33	6 646	239	0	55	184
LOWER TUGELA (NATAL)	12 893	212	9	952	11 720	9 526	0	0	59	9 467	669	0	58	611
STATISTIESE STREEK 34 STATISTICAL REGION 34	12 893	212	9	952	11 720	9 526	0	0	59	9 467	669	0	58	611
CAMPESBOWN (NATAL)	4 989	99	10	28	4 852	2 951	5	0	0	2 946	301	1	1	299
RICHMOND (NATAL)	5 755	99	29	48	5 579	1 674	1	26	3	1 644	278	5	2	271
IKROD (NATAL)	4 223	79	21	0	4 123	1 557	0	3	0	1 554	353	2	0	351
NEW HANOVER (NATAL)	8 733	108	7	85	8 533	2 708	1	0	0	2 707	377	0	5	372

21

3 - WERKGELEENTHEID, SALARISSE EN LONE, WAARDE VAN RANTSOEME
TABEL 3.1 - WERKGELEENTHEID, ALLE WERKNEMERS

3 - EMPLOYMENT, SALARIES AND WAGES, VALUE OF RATIONS
TABLE 3.1 - EMPLOYMENT, ALL EMPLOYEES

LANDROSDISTRIK MAGISTERIAL DISTRICT	GEREEDE WERKNEMERS - GETAL REGULAR EMPLOYEES - NUMBER					LOS WERKNEMERS - GETAL CASUAL EMPLOYEES - NUMBER					HUISBEDIENDES - GETAL DOMESTIC SERVANTS - NUMBER			
	TOTAAL TOTAL	BLANKES WHITES	KLEURLINGE COLOURED	ASIERS ASIANS	SWARTES BLACKS	TOTAAL TOTAL	BLANKES WHITES	KLEURLINGE COLOURED	ASIERS ASIANS	SWARTES BLACKS	TOTAAL TOTAL	KLEURLINGE COLOURED	ASIERS ASIANS	SWARTES BLACKS
LIENS RIVER(NATAL)	4 415	119	15	34	4 245	1 424	2	0	0	1 422	494	1	2	491
UMVOTI(NATAL)	7 059	125	7	100	6 827	3 336	0	0	3	3 333	389	0	4	385
KRANSKOP(NATAL)	2 501	34	3	16	2 448	1 497	1	0	0	1 496	87	0	0	87
STATISTIESE STREEK 37 STATISTICAL REGION 37	37 695	663	92	313	36 627	15 147	10	29	6	15 102	2 279	9	14	2 256
PIETERMARITZBURG(NATAL)	2 388	84	3	53	2 248	626	1	1	0	624	160	0	2	158
STATISTIESE STREEK 38 STATISTICAL REGION 38	2 388	84	3	53	2 248	626	1	1	0	624	160	0	2	158
PORT SHEPSTONE(NATAL)	6 052	88	7	61	5 896	2 708	5	2	2	2 699	333	1	0	332
ALFRED(NATAL)	2 010	49	8	3	1 950	1 404	2	0	0	1 402	172	0	0	172
STATISTIESE STREEK 39 STATISTICAL REGION 39	8 062	137	15	64	7 846	4 112	7	2	2	4 101	505	1	0	504
URZINTO(NATAL)	6 708	80	16	228	6 384	4 848	0	1	13	4 834	229	1	4	224
STATISTIESE STREEK 40 STATISTICAL REGION 40	6 708	80	16	228	6 384	4 848	0	1	13	4 834	229	1	4	224
UNDERBERG(NATAL)	1 325	44	3	2	1 276	461	1	0	0	460	188	0	0	188
IMPENDLE(NATAL)	713	23	8	1	681	549	0	2	0	547	106	0	0	106
POLELA(NATAL)	1 085	25	3	0	1 057	185	0	0	1	184	68	0	0	68
STATISTIESE STREEK 41 STATISTICAL REGION 41	3 123	92	14	3	3 014	1 195	1	2	1	1 191	362	0	0	362
MOUNT CURRIE	3 996	43	93	0	3 860	2 140	0	13	0	2 127	732	9	0	723
STATISTIESE STREEK 42 STATISTICAL REGION 42	3 996	43	93	0	3 860	2 140	0	13	0	2 127	732	9	0	723
NEWCASTLE(NATAL)	926	13	3	1	909	913	0	0	0	913	128	0	0	128
UTRECHT	1 909	11	7	0	1 891	2 292	3	1	0	2 288	348	0	0	348
DANNHAUSEN(NATAL)	563	7	8	2	546	516	0	0	0	516	94	0	0	94
DUNDEE(NATAL)	1 151	14	0	3	1 134	1 202	2	1	0	1 199	259	0	0	259
GLEN COE(NATAL)	639	8	8	1	622	447	0	0	0	447	108	0	0	108
KLIP RIVIER(NATAL)	2 090	38	4	7	2 041	954	0	0	1	953	294	3	0	291
WEENEN(NATAL)	726	25	0	4	697	731	0	1	0	730	44	0	0	44
MOOIRIVIER/MOOI RIVER	1 990	61	6	2	1 921	1 121	7	2	0	1 112	360	1	0	359
ESTCOURT(NATAL)	2 561	44	3	8	2 506	1 957	0	1	0	1 956	377	0	1	376
BERGVILLE(NATAL)	1 226	14	0	8	1 204	1 765	0	0	0	1 765	204	0	0	204
STATISTIESE STREEK 43 STATISTICAL REGION 43	13 781	255	39	36	13 471	11 898	12	6	1	11 879	2 216	4	1	2 211

3 - WERKGELEENTHEID, SALARISSE EN LONE, WAARDE VAN RANTSOENE
 TABEL 3.1 - WERKGELEENTHEID, ALLE WERKNEMERS

3 - EMPLOYMENT, SALARIES AND WAGES, VALUE OF RATIONS
 TABLE 3.1 - EMPLOYMENT, ALL EMPLOYEES

LANDROSDISTRIK MAGISTERIAL DISTRICT	GEREEDE WERKNEMERS - GETAL REGULAR EMPLOYEES - NUMBER					LOS WERKNEMERS - GETAL CASUAL EMPLOYEES - NUMBER					HUISBEDIENDES - GETAL DOMESTIC SERVANTS - NUMBER				
	TOTAAL TOTAL	BLANKES WHITES	KLEURLINGE COLOURED	ASIERS ASIANS	SWARTES BLACKS	TOTAAL TOTAL	BLANKES WHITES	KLEURLINGE COLOURED	ASIERS ASIANS	SWARTES BLACKS	TOTAAL TOTAL	KLEURLINGE COLOURED	ASIERS ASIANS	SWARTES BLACKS	
PAULPIETERSBURG(NATAL)	1 590	19	0	0	1 571	945	0	0	0	945	176	0	0	176	
NGOTSHI	3 923	60	5	40	3 818	2 488	0	0	6	2 482	239	0	2	237	
VRYHEID(NATAL)	3 048	53	5	0	2 990	2 849	2	0	0	2 847	388	0	0	388	
BABANANGO(NATAL)	645	13	0	0	632	350	0	0	0	350	112	3	0	109	
STATISTIESE STREEK STATISTICAL REGION	44 44	9 206	145	10	40	9 011	6 632	2	0	6	6 624	915	3	2	910
HLABISA(NATAL)	5 300	98	11	10	5 181	1 625	0	0	0	1 625	221	0	0	221	
LOWER UMFOLOZI(NATAL)	9 517	166	13	77	9 261	3 254	0	0	1	3 253	471	0	7	464	
MTONJANENZI(NATAL)	3 049	47	13	7	2 982	963	0	0	0	963	107	0	0	107	
ESHOWE(NATAL)	3 687	73	7	47	3 560	1 844	0	0	1	1 843	165	0	0	165	
MTUNZI(NATAL)	5 833	96	14	112	5 611	1 929	1	0	2	1 926	279	0	5	274	
FUBONBO(NATAL)	890	14	0	0	876	1 032	0	0	0	1 032	33	0	0	33	
STATISTIESE STREEK STATISTICAL REGION	45 45	28 276	494	58	253	27 471	10 647	1	0	4	10 642	1 276	0	12	1 264
*** NATAL ***		132 484	2 338	353	2 770	127 023	73 453	34	55	127	73 237	9 582	27	148	9 407
PRETORIA	3 247	159	11	1	3 076	989	5	0	0	984	277	0	0	277	
WONDERBOOM	439	9	0	0	430	174	0	0	0	178	87	1	0	86	
STATISTIESE STREEK STATISTICAL REGION	46 46	3 686	168	11	1	3 506	1 167	5	0	0	1 162	364	1	0	363
JOHANNESBURG	632	38	3	0	591	40	0	0	0	40	37	2	0	35	
RANDBURG	214	16	0	0	198	70	1	0	0	69	25	0	0	25	
STATISTIESE STREEK STATISTICAL REGION	47 47	846	54	3	0	789	110	1	0	0	109	62	2	0	60
GERRISTON	754	32	1	1	720	328	5	0	0	323	31	0	0	31	
ALBERTON	19	0	2	0	17	2	0	2	0	0	4	1	0	3	
HOKSBURG	488	26	3	0	459	334	0	1	0	333	53	2	1	50	
KEMPTON PARK	591	30	0	1	560	407	0	0	0	407	48	0	0	48	
BENONI	1 903	86	22	0	1 795	892	2	0	0	890	83	0	0	83	
STATISTIESE STREEK STATISTICAL REGION	48 48	3 755	174	28	2	3 551	1 963	7	3	0	1 953	219	3	1	215
BRAKPAN	500	4	1	0	495	300	1	0	0	299	40	0	0	40	
SPRINGS	496	7	1	0	488	96	0	0	0	96	22	0	0	22	
NIGEL	1 950	29	3	0	1 919	1 224	1	1	0	1 224	177	0	0	177	
DELMAS	4 001	88	51	0	3 882	2 680	3	1	0	2 676	255	0	0	255	
HEIDELBERG(TVL)	2 566	73	11	1	2 481	959	0	0	0	959	280	0	0	280	
BALFOUR	2 948	39	13	0	2 896	2 024	0	0	0	2 024	426	3	0	423	

3 - WERKGELEENTHEID, SALARISSE EN LONE, WAARDE VAN RANTSOEEN
 TABEL 3.1 - WERKGELEENTHEID, ALLE WERKNEMERS

3 - EMPLOYMENT, SALARIES AND WAGES, VALUE OF RATIONS
 TABLE 3.1 - EMPLOYMENT, ALL EMPLOYEES

LANDROSDISTRIK MAGISTERIAL DISTRICT	GEREEDE WERKNEMERS - GETAL REGULAR EMPLOYEES - NUMBER					LOS WERKNEMERS - GETAL CASUAL EMPLOYEES - NUMBER					HUISBEDIENDES - GETAL DOMESTIC SERVANTS - NUMBER			
	TOTAAL TOTAL	BLANKES WHITES	KLEURLINGE COLOURED	ASIERS ASIANS	SWARTES BLACKS	TOTAAL TOTAL	BLANKES WHITES	KLEURLINGE COLOURED	ASIERS ASIANS	SWARTES BLACKS	TOTAAL TOTAL	KLEURLINGE COLOURED	ASIERS ASIANS	SWARTES BLACKS
HOEVELDRIF/HIGHVELD RIDGE	773	16	2	0	695	722	0	0	0	722	72	0	0	72
STATISTIESE STREEK STATISTICAL REGION	49 49	13 174	256	62	1 12 855	8 007	5	2	0	8 000	1 272	3	0	1 269
KRUGERSDORP	3 493	106	18	0	3 369	1 126	0	9	1	1 116	296	1	0	295
ROODEPOORT	1 069	81	4	0	984	189	10	4	0	175	36	1	0	35
WESTWARIA	462	11	5	0	446	424	10	1	0	413	81	1	0	80
RANDFONTEIN	1 612	46	9	0	1 557	1 629	2	14	0	1 613	206	5	0	201
OBERHOLZER	665	24	2	0	639	290	1	0	0	289	46	0	0	46
STATISTIESE STREEK STATISTICAL REGION	50 50	7 301	268	38	6 995	3 658	23	28	1	3 606	665	8	0	657
BRITS	7 497	66	35	0	7 396	4 850	3	5	0	4 842	598	6	0	592
CULLINAN	1 022	20	3	0	999	1 066	0	1	0	1 065	150	0	0	150
GRONKHORSTSPRUIT	2 417	71	7	0	2 339	2 119	0	11	0	2 108	305	2	0	303
STATISTIESE STREEK STATISTICAL REGION	51 51	10 936	157	45	10 734	8 035	3	17	0	8 015	1 053	8	0	1 045
VEREENIGING VANDERBIJLPARK	2 758 769	88 12	9 4	2 0	2 659 753	1 160 628	0 0	0 0	0 0	1 160 628	318 118	2 0	0 0	316 118
STATISTIESE STREEK STATISTICAL REGION	52 52	3 527	100	13	3 412	1 788	0	0	0	1 788	436	2	0	434
THABAZIMBI	3 320	53	8	0	3 259	2 044	1	18	0	2 025	565	2	0	563
WARMBAD	2 249	54	36	0	2 159	2 038	0	7	0	2 031	312	1	0	311
RUSTENBURG	2 656	29	12	0	2 615	1 529	0	15	0	1 514	316	0	0	316
SWARTRUGGENS	957	8	9	0	940	929	0	1	0	928	167	3	0	164
MARICO	3 015	31	11	0	2 973	3 180	0	0	0	3 180	445	0	0	445
STATISTIESE STREEK STATISTICAL REGION	55 55	12 197	175	76	11 946	9 720	1	41	0	9 678	1 805	6	0	1 799
PIETERSBURG	4 833	85	6	0	4 742	4 087	3	0	0	4 084	532	0	0	532
POTGIETERSBURG	15 590	210	10	0	15 370	10 087	1	0	0	10 086	1 123	0	0	1 123
WATERBERG	5 026	56	5	0	4 965	5 505	12	0	0	5 493	753	0	0	753
MESSINA	2 216	38	0	0	2 178	1 041	0	0	0	1 041	184	0	0	184
SOUTPANSBERG	6 998	91	5	0	6 902	3 798	2	1	0	3 795	1 048	0	0	1 048
LETABA(TVL)	21 012	321	13	0	20 678	10 931	3	4	0	10 924	880	1	0	879
STATISTIESE STREEK STATISTICAL REGION	56 56	55 675	801	39	54 835	35 449	21	5	0	35 423	4 520	1	0	4 519
NELSPRUIT(TVL)	10 234	305	16	0	9 913	2 181	2	15	0	2 164	410	3	0	407
BARBERTON(TVL)	15 860	353	12	4	15 491	5 844	1	1	0	5 842	538	4	0	534

3 - WERKGELEENTHEID, SALARISSE EN LONE, WAARDE VAN RANTSOENE
TABEL 3.1 - WERKGELEENTHEID, ALLE WERKNEMERS

3 - EMPLOYMENT, SALARIES AND WAGES, VALUE OF RATIONS
TABLE 3.1 - EMPLOYMENT, ALL EMPLOYEES

LANDROSDISTRIK MAGISTERIAL DISTRICT	GEREEDE WERKNEMERS - GETAL REGULAR EMPLOYEES - NUMBER					LOS WERKNEMERS - GETAL CASUAL EMPLOYEES - NUMBER					HUISBEDIENDES - GETAL DOMESTIC SERVANTS - NUMBER			
	TOTAAL TOTAL	BLANKES WHITES	KLEURLINGE COLOURED	ASIERS ASIANS	SWARTES BLACKS	TOTAAL TOTAL	BLANKES WHITES	KLEURLINGE COLOURED	ASIERS ASIANS	SWARTES BLACKS	TOTAAL TOTAL	KLEURLINGE COLOURED	ASIERS ASIANS	SWARTES BLACKS
WITRIVIER	5 219	126	5	0	5 088	823	2	0	0	821	254	1	0	253
PELGRIMSRUS	10 250	392	10	0	9 848	2 483	3	0	0	2 480	349	0	0	349
LYDENBURG	3 947	91	9	0	3 847	3 473	2	17	0	3 454	449	2	0	447
STATISTIESE STREEK STATISTICAL REGION	57 57	45 510	1 267	52	4 44 187	14 804	10	33	0	14 761	2 000	10	0	1 990
WITBANK	1 847	35	5	0	1 807	1 688	2	1	0	1 685	235	2	0	233
MIDDELBURG(TVL)	4 774	76	12	0	4 686	6 838	8	7	0	6 829	711	1	0	710
GROBLERSDAL	4 688	72	9	1	4 606	7 161	0	14	0	7 147	388	2	0	386
BELFAST	1 869	32	2	1	1 834	1 677	0	12	0	1 665	276	0	0	276
WATERVAL-BOVEN	408	9	1	0	398	212	1	0	0	211	62	0	0	62
STATISTIESE STREEK STATISTICAL REGION	58 58	13 586	224	29	2 13 331	17 576	11	28	0	17 537	1 672	5	0	1 667
BETHAL	4 079	44	3	0	4 032	4 217	0	7	0	4 216	387	0	0	387
STANDERTON	6 386	57	27	0	6 308	4 476	4	5	0	4 467	999	4	0	995
VOLKSRUST	1 482	4	2	0	1 476	1 605	1	6	0	1 598	279	0	0	279
CAROLINA	3 150	53	9	0	3 088	1 694	4	0	0	1 690	311	1	0	310
ERNELO	9 921	166	61	0	9 694	4 945	2	22	0	4 921	824	2	0	822
AMERSFOORT	1 320	7	0	0	1 313	1 067	1	0	0	1 066	212	0	0	212
WAKKERSTROOM	2 498	22	0	0	2 476	793	0	6	0	787	187	0	0	187
PIET RETIEF(TVL)	9 183	102	1	4	9 076	3 029	1	0	0	3 028	544	0	0	544
STATISTIESE STREEK STATISTICAL REGION	59 59	38 079	453	97	4 37 463	21 826	13	40	0	21 773	3 743	7	0	3 736
KLERKSDORP	3 898	47	32	0	3 819	2 826	1	0	0	2 825	568	6	0	562
STATISTIESE STREEK STATISTICAL REGION	60 60	3 898	47	32	0 3 819	2 826	1	0	0	2 825	568	6	0	562
POTCHEFSTROOM	3 521	68	74	0	3 379	2 508	1	14	0	2 493	605	15	0	590
VENTERSDORP	3 172	33	29	0	3 110	2 698	2	6	0	2 690	466	6	0	460
COLIGNY	2 393	23	15	0	2 353	3 070	4	0	0	3 064	343	0	0	343
KOSTER	3 043	49	15	0	2 979	3 257	2	30	0	3 225	499	3	0	496
LICHTENBURG	8 575	85	67	0	8 423	12 585	1	2	0	12 582	1 324	3	0	1 321
DELAREYVILLE	3 704	37	38	0	3 629	4 624	0	7	0	4 617	639	5	0	634
WOLMARANSSTAD	5 298	31	44	3	5 220	5 856	3	14	0	5 839	1 025	8	1	1 016
SCHWEIZER-RENEKE	3 228	22	23	0	3 183	4 828	0	12	0	4 816	766	3	0	763
BLOEMHOF	964	4	23	0	937	1 183	0	0	0	1 183	256	3	0	253
CHRISTIANA	919	18	13	0	888	1 150	0	20	0	1 130	155	6	0	149
STATISTIESE STREEK STATISTICAL REGION	61 61	34 817	370	341	3 34 103	41 759	13	105	0	41 641	6 078	52	1	6 025

3 - WERKGELEENTHEID, SALARISSE EN LONE, WAARDE VAN RANTSOENE
TABEL 3.1 - WERKGELEENTHEID, ALLE WERKNEMERS

3 - EMPLOYMENT, SALARIES AND WAGES, VALUE OF RATIONS
TABLE 3.1 - EMPLOYMENT, ALL EMPLOYEES

LANDROSDISTRIK MAGISTERIAL DISTRICT	GEREEDE WERKNEMERS - GETAL REGULAR EMPLOYEES - NUMBER					LOS WERKNEMERS - GETAL CASUAL EMPLOYEES - NUMBER					HUISBEDIENDES - GETAL DOMESTIC SERVANTS - NUMBER				
	TOTAAL TOTAL	BLANKES WHITES	KLEURLINGE COLOURED	ASIERS ASIANS	SWARTES BLACKS	TOTAAL TOTAL	BLANKES WHITES	KLEURLINGE COLOURED	ASIERS ASIANS	SWARTES BLACKS	TOTAAL TOTAL	KLEURLINGE COLOURED	ASIERS ASIANS	SWARTES BLACKS	
*** TRANSVAAL ***	246 927	4 516	866	19	241 526	168 688	114	302	1	168 271	24 457	114	2	24 341	
BOSHOF	3 885	34	99	0	3 752	4 287	0	16	0	4 271	780	16	0	764	
JACOBSDAL	1 012	11	188	0	813	1 791	0	267	0	1 524	217	42	0	175	
KOFFIEFONTEIN	656	21	66	0	569	328	0	53	0	275	108	17	0	91	
FAURESMITH	1 115	11	272	0	832	2 036	1	648	0	1 387	371	86	0	285	
STATISTIESE STREEK STATISTICAL REGION	27 27	6 668	77	625	0	5 966	8 442	1	984	0	7 457	1 476	161	0	1 315
ZASTRON	1 165	10	1	0	1 154	1 319	0	1	0	1 318	314	0	0	314	
DOUXVILLE	1 092	15	23	0	1 054	731	3	9	0	719	356	14	0	342	
SMITHFIELD	744	4	14	0	726	751	0	4	0	747	279	3	0	276	
BETHULIE	676	1	121	0	554	469	0	39	0	430	232	29	0	203	
STATISTIESE STREEK STATISTICAL REGION	33 33	3 677	30	159	0	3 488	3 270	3	53	0	3 214	1 181	46	0	1 135
SASOLBURG	1 255	16	0	0	1 239	485	0	0	0	485	187	0	0	187	
STATISTIESE STREEK STATISTICAL REGION	53 53	1 255	16	0	1 239	485	0	0	0	485	187	0	0	187	
KROONSTAD	4 734	73	24	0	4 637	3 691	0	0	0	3 691	908	8	0	900	
VENTERSBURG	1 216	11	2	0	1 203	845	1	14	0	830	245	0	0	245	
HENNINGMAN	1 106	15	1	0	1 090	634	0	0	0	634	204	2	0	202	
PARYS	1 075	15	3	0	1 057	623	0	0	0	623	177	4	0	173	
VREDEFORT	4 517	17	6	0	4 494	2 751	0	0	0	2 751	294	2	0	292	
KOPPIES	2 352	28	9	0	2 315	1 866	2	0	0	1 864	388	0	0	388	
HEILBRON	3 157	13	2	0	3 142	2 904	2	0	0	2 902	891	0	0	891	
VILJOENSKROON	3 957	90	1	0	3 866	2 107	0	0	0	2 107	619	0	0	619	
BOTHAVILLE	4 908	92	20	0	4 796	3 347	0	6	0	3 341	691	1	0	690	
WESSELSBRON	2 272	25	2	0	2 245	2 273	0	1	0	2 272	446	1	0	445	
HOOPSTAD	3 144	23	15	0	3 106	3 214	0	5	0	3 209	568	3	0	565	
BULTFONTEIN	2 803	18	7	0	2 778	2 232	8	1	0	2 223	718	0	0	718	
THEUNISSEN	2 048	18	14	0	2 016	1 946	2	11	0	1 933	412	3	0	409	
STATISTIESE STREEK STATISTICAL REGION	62 62	37 289	438	106	0	36 745	28 433	15	38	0	28 380	6 561	24	0	6 537
BETHLEHEM	5 004	57	3	0	4 944	3 894	1	0	0	3 893	1 277	3	0	1 274	
HARRISMITH	5 955	85	8	0	5 862	4 202	4	0	0	4 198	1 043	2	0	1 041	
VREDE	7 208	24	13	0	7 171	3 412	1	113	0	3 298	934	3	0	931	
FRANKFORT	4 585	58	0	0	4 527	2 185	2	38	0	2 145	1 093	3	0	1 090	
REITZ	2 760	16	7	0	2 737	1 936	2	16	0	1 918	778	5	0	773	
LINDLEY	2 995	25	9	0	2 961	2 045	2	0	0	2 043	958	0	0	958	

3 - WERKGELEENTHEID, SALARISSE EN LONE, WAARDE VAN RANTSOENE
 TABEL 3.1 - WERKGELEENTHEID, ALLE WERKNEMERS

3 - EMPLOYMENT, SALARIES AND WAGES, VALUE OF RATIONS
 TABLE 3.1 - EMPLOYMENT, ALL EMPLOYEES

LANDROSDISTRIK MAGISTERIAL DISTRICT	GEREEDELDE WERKNEMERS - GETAL REGULAR EMPLOYEES - NUMBER					LOS WERKNEMERS - GETAL CASUAL EMPLOYEES - NUMBER					HUISBEDIENDES - GETAL DOMESTIC SERVANTS - NUMBER				
	TOTAAL	BLANKES	KLEURLINGE	ASIERS	SWARTES	TOTAAL	BLANKES	KLEURLINGE	ASIERS	SWARTES	TOTAAL	KLEURLINGE	ASIERS	SWARTES	
	TOTAL	WHITES	COLOUREDS	ASIANS	BLACKS	TOTAL	WHITES	COLOUREDS	ASIANS	BLACKS	TOTAL	COLOUREDS	ASIANS	BLACKS	
SENEKAL	3 842	30	7	0	3 805	2 377	1	7	0	2 369	972	3	0	969	
FOURIESBURG	1 504	26	0	0	1 478	1 150	1	0	0	1 149	262	0	0	262	
FICKSBURG	2 486	29	7	0	2 440	2 083	0	2	0	2 081	417	0	0	417	
STATISTIESE STREEK STATISTICAL REGION	63 63	36 339	350	64	0	35 925	23 264	14	176	0	23 094	7 734	19	0	7 715
ODENDAALSRSUS	995	14	3	0	978	685	0	0	0	685	196	1	0	195	
WELKOM	730	11	1	0	718	449	0	2	0	447	93	0	0	93	
VIRGINIA	773	8	4	0	761	318	0	0	0	318	161	0	0	161	
STATISTIESE STREEK STATISTICAL REGION	64 64	2 498	33	8	0	2 457	1 452	0	2	0	1 450	450	1	0	449
BLOERFONTEIN	3 505	37	114	0	3 354	2 107	6	18	0	2 083	920	28	0	892	
STATISTIESE STREEK STATISTICAL REGION	65 65	3 505	37	114	0	3 354	2 107	6	18	0	2 083	920	28	0	892
PETRUSBURG	1 321	19	44	0	1 258	974	1	7	0	966	306	6	0	300	
BRANDFORT	2 703	11	28	0	2 664	2 411	2	13	0	2 396	708	4	0	704	
WINBURG	1 651	20	2	0	1 629	1 122	0	35	0	1 087	422	0	0	422	
MARQUARD	2 216	38	24	0	2 154	1 095	0	15	0	1 080	365	0	0	365	
CLOCOLAN	1 677	8	3	0	1 666	1 477	0	0	0	1 477	330	1	0	329	
EXCELSIOR	2 262	27	12	0	2 223	1 670	0	6	0	1 664	518	0	0	518	
LADYBRAND	2 304	13	7	0	2 284	1 797	0	3	0	1 794	486	3	0	483	
WEPENER	1 259	4	14	0	1 241	898	1	18	0	879	271	1	0	270	
DEWETSDORP	1 409	14	8	0	1 387	1 046	7	0	0	1 039	443	1	0	442	
REDDERSBURG	722	5	4	0	713	815	0	0	0	815	247	0	0	247	
EDENBURG	603	8	69	0	526	469	0	7	0	462	224	19	0	205	
TROMPSBURG	501	2	88	0	411	510	0	121	0	389	177	30	0	147	
JAGERSFONTEIN	276	4	26	0	246	165	1	4	0	160	97	7	0	90	
PHILIPPOLIS	507	4	141	0	362	379	0	96	0	283	179	55	0	124	
STATISTIESE STREEK STATISTICAL REGION	66 66	19 411	177	470	0	18 764	14 828	12	325	0	14 491	4 773	127	0	4 646
*** O.V.S. / O.F.S. ***		110 642	1 158	1 546	0	107 938	82 301	51	1 596	0	80 654	23 282	406	0	22 876
TOTAAL/TOTAL R.S.A		6 69 086	13 720	104 644	2 836	547 886	483 679	472	90 725	129	392 353	85 636	14 961	157	70 518

TABEL 3.2 - SALARISSE EN LONE

TABLE 3.2 - SALARIES AND WAGES

LANDROSDISTRIK MAGISTERIAL DISTRICT	GEREEDE WERKNEMERS / REGULAR EMPLOYEES				
	TOTAAL	BLANKES	KLEURLINGE	ASIERS	SWARTES
	TOTAL	WHITES	COLOUREDS	ASIANS	BLACKS
	R	R	R	R	R
KAAP/CAPE	174 886	60 300	14 820	0	99 766
WYNBERG	2 262 809	441 499	1 041 717	1 820	777 773
SIMONSTAD/SIMONSTOWN	165 648	45 570	64 049	0	56 029
BELLVILLE	2 823 846	919 295	1 144 246	3 536	756 769
STATISTIESE STREEK 01 STATISTICAL REGION 01	5 427 189	1 466 664	2 264 832	5 356	1 690 337
STELLENBOSCH	4 063 724	1 218 793	2 338 908	0	506 023
KUILSRIVIER/RIVER	1 056 005	186 981	581 962	2 400	284 662
SOMERSET-WES/WEST	2 066 004	562 233	1 038 039	0	465 732
STRAND	149 727	34 369	59 496	0	55 862
PAARL	8 630 920	2 498 681	4 897 976	0	1 234 263
WELLINGTON	2 050 251	350 790	1 540 408	0	159 053
STATISTIESE STREEK 02 STATISTICAL REGION 02	18 016 631	4 851 867	10 456 759	2 400	2 705 595
UNIONDALE	728 262	118 318	567 212	0	42 732
JOUBERTINA	1 722 241	344 953	1 111 900	0	265 388
HUMANSDORP	2 054 535	481 920	1 212 219	0	360 396
HANKEY	1 783 702	246 742	819 607	0	717 353
STATISTIESE STREEK 04 STATISTICAL REGION 04	6 288 740	1 191 933	3 710 938	0	1 385 869
ODTSHOORN	2 507 388	423 644	2 062 235	0	21 509
CALITZDORP	540 349	35 782	495 310	0	9 257
LADISMITH	1 288 745	135 547	1 100 780	0	52 418
STATISTIESE STREEK 05 STATISTICAL REGION 05	4 336 482	594 973	3 658 325	0	83 184
KNYSNA	2 309 039	905 232	1 213 745	0	190 052
GEORGE	3 422 674	787 550	2 512 080	0	123 044
MOSSELBAAI/MOSSEL BAY	543 794	41 339	484 581	1 500	16 374
RIVERSDAL/RIVERSDALE	1 282 241	203 411	1 019 924	1 750	57 156
STATISTIESE STREEK 06 STATISTICAL REGION 06	7 557 748	1 937 532	5 230 330	3 250	386 636

TABEL 3.2 - SALARISSE EN LONE

TABLE 3.2 - SALARIES AND WAGES

LANDROESDISTRIK MAGISTERIAL DISTRICT	GEREELEDE WERKNEMERS / REGULAR EMPLOYEES				
	TOTAAL	BLANKES	KLEURLINGE	ASIERS	SWARTES
	TOTAL	WHITES	COLOUREDS	ASIANS	BLACKS
	R	R	R	R	R
CALEDON	10 781 267	3 733 927	5 871 404	0	1 175 936
HERRANUS	355 534	49 840	284 010	0	21 684
BREDAASDORP	1 090 650	331 935	724 475	4 500	29 740
SWELLENPAM	3 071 678	584 723	2 302 611	0	184 344
HEIDELBERG(KAAP/CAPE)	812 492	151 715	605 689	0	55 088
STATISTIESE STREEK 07 STATISTICAL REGION 07	16 111 621	4 852 140	9 768 189	4 500	1 466 792
WORCESTER	8 669 270	1 807 523	5 807 822	0	1 053 925
CERES	5 761 893	1 631 490	3 893 097	0	237 306
TULBAGH	2 629 384	580 017	1 956 532	0	92 835
ROBERTSON	3 145 514	632 187	2 350 920	2 496	159 911
MONTAGU	1 271 509	147 800	1 080 736	0	42 973
STATISTIESE STREEK 08 STATISTICAL REGION 08	21 477 570	4 799 017	15 089 107	2 496	1 586 950
MALMESBURY	4 459 409	1 143 174	2 360 155	0	956 080
HOPEFIELD	180 042	28 620	137 386	0	14 036
PIKETBERG	2 003 308	310 520	1 658 646	0	34 142
VREDENBURG	157 593	26 100	116 266	0	15 227
STATISTIESE STREEK 09 STATISTICAL REGION 09	6 800 352	1 508 414	4 272 453	0	1 019 485
CLANWILLIAM	2 366 174	362 203	1 950 587	1 800	51 584
VREDENDAL	1 995 348	254 748	1 678 991	0	61 609
VANRHYNSDORP	760 630	127 510	615 781	0	17 339
STATISTIESE STREEK 10 STATISTICAL REGION 10	5 122 152	744 461	4 245 359	1 800	130 532
NAMAKWALAND	1 254 131	170 102	1 009 645	1 000	73 384
STATISTIESE STREEK 11 STATISTICAL REGION 11	1 254 131	170 102	1 009 645	1 000	73 384
MALVISAANI/BAY	23 750	0	0	0	23 750
STATISTIESE STREEK 12 STATISTICAL REGION 12	23 750	0	0	0	23 750

TABEL 3.2 - SALARISSE EN LONE

TABLE 3.2 - SALARIES AND WAGES

LANDSDROSDISTRIK MAGISTERIAL DISTRICT	GEEDELD E WERKNEMERS / REGULAR EMPLOYEES				
	TOTAAL	BLANKES	KLEURLINGE	ASIERS	SWARTES
	R	R	R	R	R
PORT ELIZABETH	881 201	256 802	44 523	600	575 276
UITENHAGE	1 038 420	199 102	271 186	0	568 132
KIRKWOOD	1 825 311	436 654	248 032	0	1 140 625
STATISTIESE STREEK 14 STATISTICAL REGION 14	3 744 932	892 558	563 741	600	2 288 033
CALVINIA	1 094 489	128 822	939 302	3 600	22 765
WILLISTON	275 733	14 409	258 233	0	3 091
SUTHERLAND	356 779	34 925	319 688	0	2 166
STATISTIESE STREEK 16 STATISTICAL REGION 16	1 727 001	178 156	1 517 223	3 600	28 022
BEAUFORT-WES/WEST	806 111	113 828	668 816	0	23 467
FRASERBURG	446 222	31 452	413 090	0	1 680
LAINSBURG	574 808	47 220	522 628	0	4 960
PRINCE ALBERT	616 946	120 854	485 502	0	10 580
VICTORIA-WEST	563 355	128 000	398 566	0	36 789
MURRAYSBURG	301 331	42 100	232 022	0	27 209
STATISTIESE STREEK 17 STATISTICAL REGION 17	3 308 773	483 464	2 720 624	0	104 685
JANSENVILLE	583 696	122 805	309 502	0	151 389
STEYTLERVILLE	382 499	43 316	271 243	0	67 940
WILLOWMORE	441 513	24 765	383 208	0	33 540
STATISTIESE STREEK 18 STATISTICAL REGION 18	1 407 708	190 886	963 953	0	252 869
ABERDEEN	487 837	73 965	365 999	0	47 873
GRAAFF-REINET	775 731	161 315	481 957	360	132 099
PEARSTON	253 396	41 200	117 189	0	95 007
CRADOCK	1 042 616	196 025	194 597	0	651 994
MIDDELBURG(KAAP/CAPE)	696 099	49 387	326 133	0	320 579
STATISTIESE STREEK 19 STATISTICAL REGION 19	3 255 679	521 892	1 485 875	360	1 247 552

TABEL 3.2 - SALARISSE EN LONE

TABLE 3.2 - SALARIES AND WAGES

LANDSDROSDISTRIK MAGISTERIAL DISTRICT	GEREEDE WERKNEMERS / REGULAR EMPLOYEES				
	TOTAAL	BLANKES	KLEURLINGE	ASIERS	SWARTES
	TOTAL	WHITES	COLOUREDS	ASIANS	BLACKS
	R	R	R	R	R
HOPETOWN	526 677	68 041	400 785	0	57 851
BRITSTOWN	364 984	63 750	269 217	0	32 017
DE AAR	212 102	36 963	150 944	960	23 235
PHILIPSTOWN	352 064	57 080	224 802	0	70 182
RICHMOND (KAAP/CAPE)	494 221	98 716	327 185	0	68 320
HANOVER	443 607	198 180	89 965	0	155 462
COLESBERG	473 898	85 674	124 396	357	263 471
NOUPOORT	111 038	24 280	35 214	0	51 544
STATISTIESE STREEK 20 STATISTICAL REGION 20	2 978 591	632 684	1 622 508	1 317	722 082
PRIESKA	758 239	111 512	585 702	0	61 025
CARNARVON	545 441	75 580	458 921	0	10 940
STATISTIESE STREEK 21 STATISTICAL REGION 21	1 303 680	187 092	1 044 623	0	71 965
KIMBERLEY	904 211	214 211	221 709	0	468 291
STATISTIESE STREEK 22 STATISTICAL REGION 22	904 211	214 211	221 709	0	468 291
GORDONIA	4 815 879	313 273	3 829 218	1 120	672 268
KENHARDT	984 170	128 064	796 578	0	59 528
STATISTIESE STREEK 23 STATISTICAL REGION 23	5 800 049	441 337	4 625 796	1 120	731 796
KURUMAN	821 101	85 449	86 427	0	649 225
POSTMASBURG	848 439	100 891	306 030	0	441 518
HAY	641 138	30 620	468 469	0	142 049
STATISTIESE STREEK 24 STATISTICAL REGION 24	2 310 678	216 960	860 926	0	1 232 792
VRYBURG	2 154 719	182 508	66 028	600	1 905 583
MAFEKING	1 442 671	370 368	13 164	0	1 059 139
STATISTIESE STREEK 25 STATISTICAL REGION 25	3 597 390	552 876	79 192	600	2 964 722

TABEL 3.2 - SALARISSE EN LONE

TABLE 3.2 - SALARIES AND WAGES

LANDDROSDISTRIK MAGISTERIAL DISTRICT	GEREELEDE WERKNEMERS / REGULAR EMPLOYEES				
	TOTAAL	BLANKES	KLEURLINGE	ASIERS	SWARTES
	TOTAL R	WHITES R	COLOUREDS R	ASIANS R	BLACKS R
HERBERT	1 063 364	102 495	498 676	0	462 193
BARKLY-WES/WEST	1 066 037	221 691	136 824	0	707 522
WARRENTON	451 084	35 850	45 181	0	370 053
HARTSWATER	1 440 652	135 314	113 462	4 200	1 187 676
STATISTIESE STREEK 26 STATISTICAL REGION 26	4 021 137	495 350	794 143	4 200	2 727 444
OOS-LONDEN/EAST LONDON	1 391 590	492 945	10 570	0	888 075
KING WILLIAM'S TOWN	502 807	104 068	12 070	0	386 669
STATISTIESE STREEK 28 STATISTICAL REGION 28	1 894 397	597 013	22 640	0	1 274 744
KOMGA	316 612	73 332	2 116	0	241 164
STUTTERHEIM	939 541	225 580	15 010	0	698 951
CATHCART	438 435	84 388	1 292	0	352 755
QUEENSTOWN	521 883	110 637	7 484	0	403 762
TARKA	364 168	84 387	15 948	0	263 833
STERKSTROOM	172 256	27 017	4 839	0	140 400
MOLTEND	185 566	21 600	5 142	0	158 824
STATISTIESE STREEK 29 STATISTICAL REGION 29	2 938 461	626 941	51 831	0	2 259 689
ALBANY	1 189 085	191 438	72 767	0	924 880
SOMERSET-OOS/EAST	874 792	122 327	241 797	0	510 668
ALEXANDRIA	1 417 587	288 856	47 798	0	1 080 933
BATHURST	485 354	78 390	1 950	650	404 364
FORT BEAUFORT	426 490	107 233	21 505	0	297 752
ADELAIDE	428 000	133 195	24 153	0	270 652
BEDFORD	554 354	105 537	75 780	0	373 037
PEDDIE (KAAP/CAPE)	412 255	126 888	0	0	285 367
VICTORIA-OOS/EAST (KP/CP)	419 070	137 198	260	0	281 612
STOCKENSTROM	321 810	74 947	29 594	0	217 269
STATISTIESE STREEK 30 STATISTICAL REGION 30	6 528 797	1 366 009	515 604	650	4 646 534
BARKLY-OOS /EAST	355 311	35 304	5 228	0	314 779
WODEHOUSE	544 656	135 628	6 307	0	402 721

TABEL 3.2 - SALARISSE EM LOME

TABLE 3.2 - SALARIES AND WAGES

LANDDROSDISTRIK MAGISTERIAL DISTRICT	GEREEDE WERKNEMERS / REGULAR EMPLOYEES				
	TOTAAL	BLANKES	KLEURLINGE	ASIERS	SWARTES
	TOTAL R	WHITES R	COLOUREDS R	ASIANS R	BLACKS R
INDWE	140 932	23 550	0	0	117 382
ELLIOT	256 620	37 233	2 100	0	217 287
MACLEAR	299 386	48 610	940	0	249 836
STATISTIESE STREEK 31 STATISTICAL REGION 31	1 596 905	280 325	14 575	0	1 302 005
LADY GREY	213 813	37 700	7 240	0	168 873
ALI WAL-NOORD/NORTH	383 769	25 388	14 259	200	343 922
ALBERT	425 969	39 900	10 946	0	375 123
VENTERSTAD	143 800	4 200	26 119	0	113 481
STEYNSBURG	226 230	28 076	34 673	0	163 481
HOFMEYR	227 695	25 715	48 975	0	153 005
STATISTIESE STREEK 32 STATISTICAL REGION 32	1 621 276	160 979	142 212	200	1 317 885
*** KAAP / CAPE ***	141 356 031	30 155 816	76 973 142	33 449	34 193 624
DURBAN	230 808	22 508	0	6 605	201 695
PINETOWN (NATAL)	560 156	186 066	1 040	115 627	257 423
INANDA (NATAL)	5 127 305	616 388	9 013	1 378 584	3 123 320
STATISTIESE STREEK 35 STATISTICAL REGION 35	5 918 269	824 962	10 053	1 500 816	3 582 438
LOWER TUGELA (NATAL)	11 824 301	2 031 111	36 528	1 560 590	8 196 072
STATISTIESE STREEK 36 STATISTICAL REGION 36	11 824 301	2 031 111	36 528	1 560 590	8 196 072
CAMPERDOWN (NATAL)	3 445 677	622 228	39 921	82 699	2 700 829
RICHMOND (NATAL)	3 217 583	605 581	40 431	87 275	2 484 296
IXOPO (NATAL)	1 914 205	313 401	68 698	0	1 532 106
NEW HANOVER (NATAL)	5 009 193	804 223	23 461	153 401	4 028 108
LIONS RIVER (NATAL)	3 013 390	674 860	21 637	135 614	2 181 279
UMVOTI (NATAL)	4 448 299	939 545	13 151	254 343	3 241 260
KRANSKOP (NATAL)	1 342 736	211 792	5 133	32 903	1 092 908
STATISTIESE STREEK 37 STATISTICAL REGION 37	22 391 083	4 171 630	212 432	746 235	17 260 786

TABEL 3.2 - SALARISSE EN LONE

TABLE 3.2 - SALARIES AND WAGES

LANDROSDISTRIK MAGISTERIAL DISTRICT	GEREEFDE WERKNEMERS / REGULAR EMPLOYEES				
	TOTAAL	BLANKES	KLEURLINGE	ASIERS	SWARTES
	TOTAL	WHITES	COLOUREDS	ASIANS	BLACKS
	R	R	R	R	R
PIETERMARITZBURG(NATAL)	2 362 578	533 177	9 600	158 752	1 661 049
STATISTIESE STREEK 38 STATISTICAL REGION 38	2 362 578	533 177	9 600	158 752	1 661 049
PORT SHEPSTONE(NATAL)	3 038 930	470 491	8 310	146 403	2 413 726
ALFRED(NATAL)	1 285 873	305 493	24 826	7 024	948 530
STATISTIESE STREEK 39 STATISTICAL REGION 39	4 324 803	775 984	33 136	153 427	3 362 256
UMZINTO(NATAL)	5 304 459	775 708	47 980	320 369	4 160 402
STATISTIESE STREEK 40 STATISTICAL REGION 40	5 304 459	775 708	47 980	320 369	4 160 402
UNDERBERG(NATAL)	720 351	183 658	5 432	2 000	529 261
IMPENDE(NATAL)	387 028	115 512	4 472	2 400	264 644
POLELA(NATAL)	1 049 214	199 819	10 421	0	838 974
STATISTIESE STREEK 41 STATISTICAL REGION 41	2 156 593	498 989	20 325	4 400	1 632 879
MOUNT CURRIE	1 404 552	170 465	48 199	0	1 185 888
STATISTIESE STREEK 42 STATISTICAL REGION 42	1 404 552	170 465	48 199	0	1 185 888
NEWCASTLE(NATAL)	375 097	46 340	2 000	3 000	323 757
UTRECHT	682 722	57 720	2 208	0	622 794
DANNHAUSER(NATAL)	224 884	36 060	8 100	2 100	178 624
DUNDEE(NATAL)	532 657	60 510	0	13 700	458 447
GLENCOE(NATAL)	242 477	18 000	3 160	600	220 717
KLIPRIVIER(NATAL)	704 510	152 315	5 080	19 700	527 415
MEEMEN(NATAL)	451 418	173 935	0	13 580	263 903
MOOIRIVIER/MOOI RIVER	1 270 767	341 120	6 960	4 338	918 349
ESTCOURT(NATAL)	1 282 745	261 799	4 400	16 992	999 554
BERGVILLE(NATAL)	582 016	67 290	0	16 835	497 891
STATISTIESE STREEK 43 STATISTICAL REGION 43	6 349 293	1 215 089	31 908	90 845	5 011 451

TABEL 3.2 - SALARISSE EN LONE

TABLE 3.2 - SALARIES AND WAGES

LANDROSDISTRIK MAGISTERIAL DISTRICT	GEREEDE MERKNEMERS / REGULAR EMPLOYEES				
	TOTAAL	BLANKES	KLEURLINGE	ASIERS	SWARTES
	TOTAL	WHITES	COLOUREDS	ASIANS	BLACKS
	R	R	R	R	R
PAULPIETERSBURG(NATAL)	685 732	113 350	0	0	572 382
NGOTSHE	1 996 238	421 544	11 508	0	1 563 186
VRYHEID(NATAL)	1 600 050	476 172	1 250	0	1 122 628
BABANWANGO(NATAL)	257 826	45 346	0	0	212 480
STATISTIESE STREEK 44 STATISTICAL REGION 44	4 539 846	1 056 412	12 758	0	3 470 676
HLABISA(NATAL)	3 040 691	811 425	26 240	33 146	2 169 880
LOWER UMFOLOZI(NATAL)	6 978 830	1 319 446	41 598	223 191	5 394 595
MTONJANENI(NATAL)	1 842 599	298 977	36 751	27 440	1 479 431
ESHONE(NATAL)	2 754 398	719 795	14 150	168 703	1 851 750
MTUNZINI(NATAL)	4 788 388	919 713	41 408	278 680	3 548 587
UBONDO(NATAL)	261 842	69 075	923	0	191 844
STATISTIESE STREEK 45 STATISTICAL REGION 45	19 666 748	4 138 431	161 070	731 160	14 636 087
*** NATAL ***	86 242 525	16 191 958	623 989	5 266 594	64 159 984
PRETORIA WONDERBOOM	3 019 464 327 795	982 248 58 919	11 693 0	0 0	2 025 523 268 876
STATISTIESE STREEK 46 STATISTICAL REGION 46	3 347 259	1 041 167	11 693	0	2 294 399
JOHANNESBURG HAMBURG	791 848 305 997	275 061 104 703	1 320 0	0 0	515 467 201 294
STATISTIESE STREEK 47 STATISTICAL REGION 47	1 097 845	379 764	1 320	0	716 761
GERMISTON	781 743	235 478	4 200	7 225	534 840
ALBERTON	15 240	0	2 400	0	12 840
BOKSBURG	498 844	156 551	3 574	0	338 719
KENPTON PARK	566 806	201 971	0	9 600	355 235
BENONI	1 529 067	425 558	7 260	0	1 096 249
STATISTIESE STREEK 48 STATISTICAL REGION 48	3 391 700	1 019 558	17 434	16 825	2 337 883

TABEL 3.2 - SALARISSE EN LONE

TABLE 3.2 - SALARIES AND WAGES

LANDROSDISTRIK MAGISTERIAL DISTRICT	GEREELEDE WERKNEMERS / REGULAR EMPLOYEES				
	TOTAAL	BLANKES	KLEURLINGE	ASIERS	SWARTES
	TOTAL	WHITES	COLOUREDS	ASIANS	BLACKS
	R	R	R	R	R
BRAKPAN	300 000	18 400	300	0	281 300
SPRINGS	272 232	48 447	0	0	223 785
NIGEL	1 157 593	212 093	1 228	0	944 272
DELMAS	2 658 372	759 456	37 034	0	1 861 882
HEIDELBERG(TVL)	1 729 669	483 274	5 035	3 960	1 237 400
BALFOUR	1 718 746	202 346	7 480	0	1 508 920
HOEVELDRIF/HIGHVELD RIDGE	392 682	85 200	1 200	0	306 282
STATISTIESE STREEK 49 STATISTICAL REGION 49	8 229 294	1 809 216	52 277	3 960	6 363 841
KRUGERSDORP	2 738 599	747 930	20 037	0	1 970 632
ROODEPOORT	1 900 908	799 422	1 200	0	1 100 286
WESTONARIA	250 210	27 000	8 840	0	214 370
RANDFONTEIN	1 395 263	454 730	7 140	0	933 393
OBERHOLZIER	535 929	218 546	720	0	316 663
STATISTIESE STREEK 50 STATISTICAL REGION 50	6 820 909	2 247 628	37 937	0	4 535 344
BRITS	3 751 113	322 937	25 383	0	3 402 793
CULLINAN	653 205	127 013	960	0	525 232
BRONKHORSTSPRUIT	1 563 049	412 078	4 524	0	1 146 447
STATISTIESE STREEK 51 STATISTICAL REGION 51	5 967 367	862 028	30 867	0	5 074 472
VEREENIGING VANDERBIJLPARK	2 047 212 487 987	546 926 68 296	12 589 7 360	7 331 0	1 480 366 412 331
STATISTIESE STREEK 52 STATISTICAL REGION 52	2 535 199	615 222	19 949	7 331	1 892 697
THABAZIMBI	1 701 820	285 340	5 550	0	1 410 930
WARMBAD	1 434 701	335 805	24 732	0	1 076 164
RUSTENBURG	1 454 218	190 169	5 224	0	1 258 825
SWARTRUGGENS	429 070	51 592	3 554	0	373 924
MARICO	1 227 843	178 814	4 980	0	1 044 049
STATISTIESE STREEK 55 STATISTICAL REGION 55	6 247 652	1 039 720	44 040	0	5 163 892

LANDROSDISTRIK MAGISTERIAL DISTRICT	GEREEDE WERKNEMERS / REGULAR EMPLOYEES				
	TOTAAL	BLANKES	KLEURLINGE	ASIERS	SWARTES
	TOTAL	WHITES	COLOUREDS	ASIANS	BLACKS
	R	R	R	R	R
PIETERSBURG	2 583 029	569 060	11 280	0	2 002 689
POTGIETERSRUS	5 971 279	1 685 379	3 590	0	4 282 310
WATERBERG	2 272 116	285 938	2 100	0	1 984 078
MESSINA	829 298	142 799	0	0	686 499
SOUTPANSBERG	2 812 946	504 809	3 336	0	2 304 801
LETABA(TVL)	10 362 469	2 620 322	14 683	0	7 727 464
STATISTIESE STREEK 56 STATISTICAL REGION 56	24 831 137	5 808 307	34 989	0	18 987 841
NELSPRUIT(TVL)	7 424 013	2 452 342	13 748	0	4 957 923
BARBERTON(TVL)	11 329 748	4 152 299	15 176	2 000	7 160 273
WITRIVIER	3 680 165	1 020 098	7 419	0	2 652 648
PELGRIMSRUS	9 352 284	2 459 700	23 750	264	6 868 570
LYDENBURG	2 674 489	528 128	13 200	0	2 133 161
STATISTIESE STREEK 57 STATISTICAL REGION 57	34 460 699	10 612 567	73 293	2 264	23 772 575
WITBANK	1 316 487	253 898	2 280	0	1 060 309
MIDDELBURG(TVL)	3 065 915	570 987	4 825	0	2 490 103
GROBLERSDAL	2 689 857	516 590	4 300	1 765	2 167 202
BELFAST	1 013 225	164 821	160	2 800	845 444
WATERVAL-BOVEN	256 524	55 384	330	0	200 810
STATISTIESE STREEK 58 STATISTICAL REGION 58	8 342 008	1 561 680	11 895	4 565	6 763 868
BETHAL	2 473 611	428 960	3 136	0	2 041 515
STANDERTON	2 976 355	362 118	6 270	16 600	2 591 367
VOLKSRUST	479 556	19 200	688	0	459 668
CAROLINA	2 093 446	383 460	4 800	0	1 705 186
ERMELD	6 128 647	1 160 973	4 460	0	4 963 214
AMERSFOORT	336 078	13 800	0	0	322 278
WAKKERSTROOM	820 559	119 900	0	0	700 659
PIET RETIEF(TVL)	4 183 185	689 743	960	2 910	3 489 572
STATISTIESE STREEK 59 STATISTICAL REGION 59	19 491 437	3 178 154	20 314	19 510	16 273 459
KLERKSDORP	2 094 164	284 624	15 376	0	1 794 164

TABEL 3.2 - SALARISSE EN LONE

TABLE 3.2 - SALARIES AND WAGES

LANDROSDISTRIK MAGISTERIAL DISTRICT	GEREELDE WERKNEMERS / REGULAR EMPLOYEES				
	TOTAAL	BLANKES	KLEURLINGE	ASIERS	SWARTES
	TOTAL	WHITES	COLOUREDS	ASIANS	BLACKS
	R	R	R	R	R
STATISTIESE STREEK 60 STATISTICAL REGION 60	2 094 164	284 624	15 376	0	1 794 164
POTCHEFSTROOM	1 947 190	335 588	31 322	0	1 580 280
VENTERSDORP	1 786 360	245 843	15 308	0	1 525 209
COLIGNY	1 342 136	185 522	7 396	0	1 149 218
KOSTER	2 179 512	650 034	6 292	0	1 523 186
LICHTENBURG	4 910 702	750 655	25 926	0	4 134 121
DELAREYVILLE	2 278 260	309 290	25 674	0	1 943 296
WOLMARANSSTAD	2 595 219	225 808	21 838	1 200	2 346 373
SCHWEIZER-RENEKE	1 425 481	116 000	8 956	0	1 300 525
BLOEMHOF	386 779	20 850	10 244	1 000	354 685
CHRISTIANA	492 723	140 237	6 360	1 800	344 326
STATISTIESE STREEK 61 STATISTICAL REGION 61	19 344 362	2 979 827	159 316	4 000	16 201 219
*** TRANSVAAL ***	146 201 032	33 439 462	530 700	58 455	112 172 415
BOSHOF	1 557 847	182 986	49 909	0	1 324 952
JACOBSDAL	490 304	30 880	87 277	0	372 147
KOFFIEFONTEIN	247 405	46 970	25 652	0	174 783
FAURESMTIH	456 799	53 200	128 599	0	275 000
STATISTIESE STREEK 27 STATISTICAL REGION 27	2 752 355	314 036	291 437	0	2 146 882
ZASTRON	302 200	24 592	108	0	277 500
ROUXVILLE	329 687	48 627	8 010	0	273 050
SMITHFIELD	224 964	15 035	5 689	0	204 240
BETHULIE	214 766	6 150	36 617	0	171 999
STATISTIESE STREEK 33 STATISTICAL REGION 33	1 071 617	94 404	50 424	0	926 789
SASOLBURG	718 732	127 618	0	0	591 114
STATISTIESE STREEK 53 STATISTICAL REGION 53	718 732	127 618	0	0	591 114

TABEL 3.2 - SALARISSE EN LONE

TABLE 3.2 - SALARIES AND WAGES

LANDROSDISTRIK MAGISTERIAL DISTRICT	GEREEDE WERKNEMERS / REGULAR EMPLOYEES				
	TOTAAL	BLANKES	KLEURLINGE	ASIERS	SWARTES
	TOTAL	WHITES	COLOUREDS	ASIANS	BLACKS
	R	R	R	R	R
KROONSTAD	2 666 469	481 893	9 872	0	2 174 704
VENTERSBURG	519 482	60 474	1 620	0	457 388
HENNEMAN	497 644	40 657	540	0	456 447
PARYS	645 204	72 336	2 312	0	570 556
VREDEFORT	770 897	75 208	2 064	0	693 625
KOPPIES	1 308 574	307 230	2 840	0	998 504
HEILBRON	1 200 792	34 976	744	0	1 165 072
VILJOENSKROON	2 903 755	763 305	1 500	0	2 138 950
BOTHAVILLE	3 763 743	878 195	8 848	0	2 876 700
WESSELSBRON	1 694 868	242 364	2 400	0	1 450 104
HOOPSTAD	1 499 877	132 193	5 042	0	1 362 642
BULTFONTEIN	1 331 890	150 777	1 326	0	1 179 787
THEUNISSEM	948 443	97 180	5 740	0	845 523
STATISTIESE STREEK 62 STATISTICAL REGION 62	19 751 638	3 336 788	44 848	0	16 370 002
BETHLEHEM	2 488 970	438 108	450	0	2 050 412
HARRISWITH	2 146 024	344 642	1 260	0	1 800 122
VREDE	1 324 933	70 135	4 840	0	1 249 958
FRANKFORT	2 409 728	251 496	0	0	2 158 232
REITZ	1 359 908	140 398	1 383	0	1 218 127
LINDLEY	1 442 221	203 015	3 990	0	1 235 216
SENEKAL	1 349 877	146 911	2 258	0	1 200 708
FOURIESBURG	622 438	187 339	250	0	434 849
FICKSBURG	949 059	145 061	2 950	0	801 048
STATISTIESE STREEK 63 STATISTICAL REGION 63	14 093 158	1 927 105	17 381	0	12 148 672
ODENDAALSRUS	641 841	98 816	2 920	0	540 105
WELKOM	334 813	50 300	1 300	0	283 213
VIRGINIA	451 633	94 693	1 260	0	355 680
STATISTIESE STREEK 64 STATISTICAL REGION 64	1 428 287	243 809	5 480	0	1 178 998
BLOEMFONTEIN	1 453 426	211 989	36 497	0	1 204 940
STATISTIESE STREEK 65 STATISTICAL REGION 65	1 453 426	211 989	36 497	0	1 204 940

